

FOOD & BEVERAGE OPPORTUNITIES

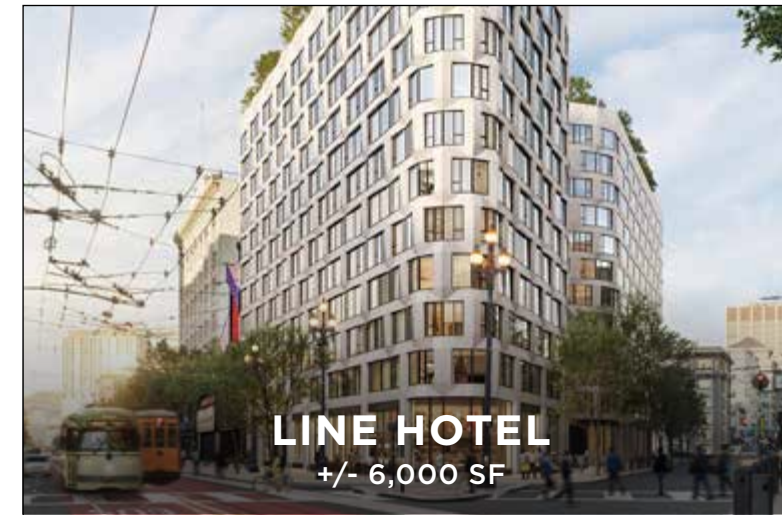
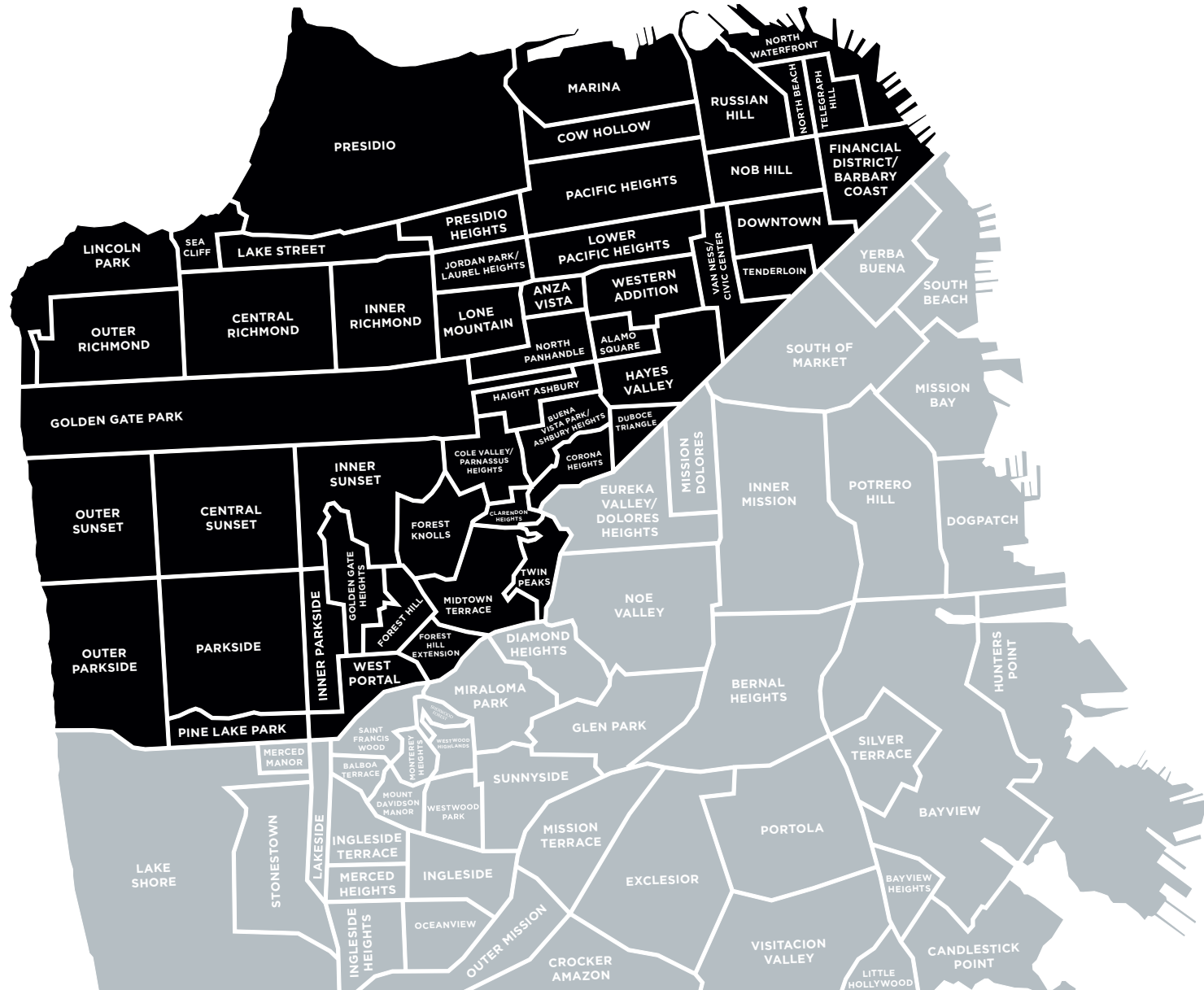
FALL 2024

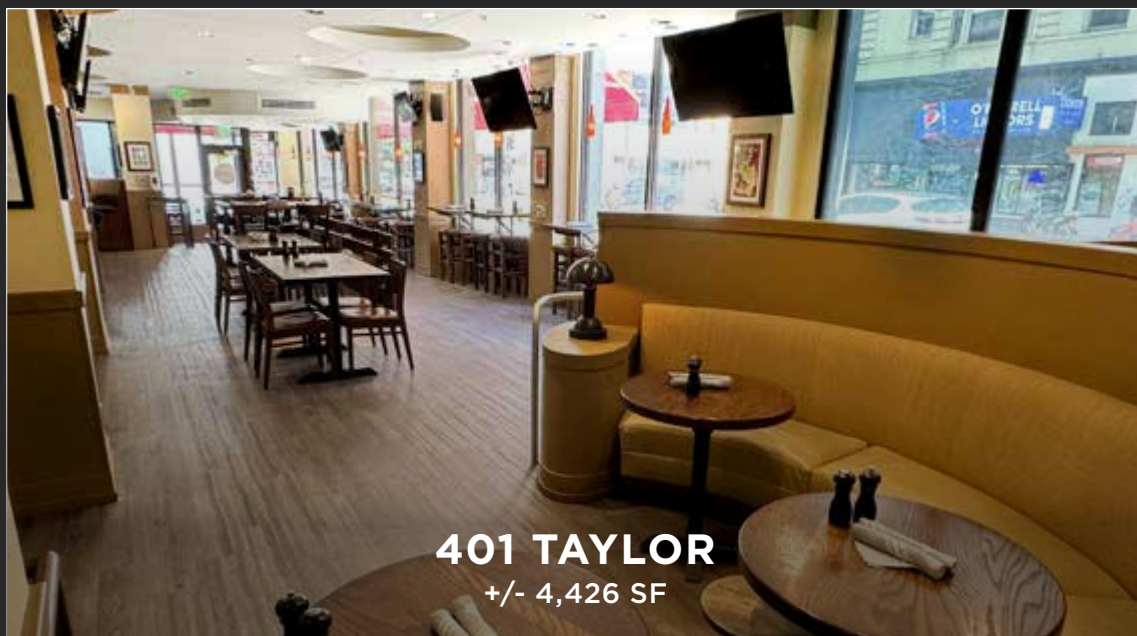
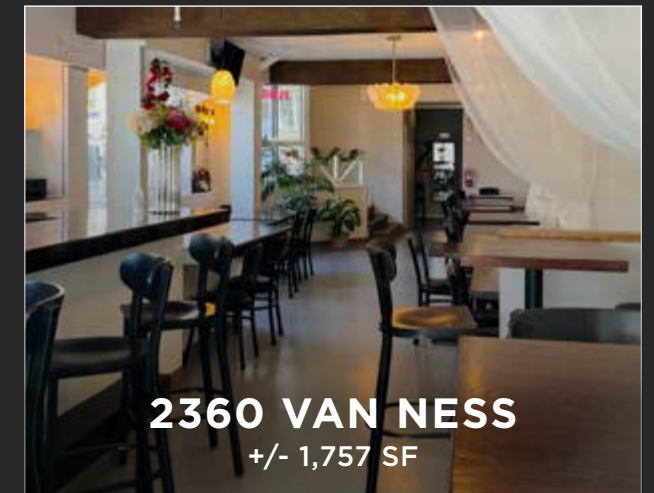
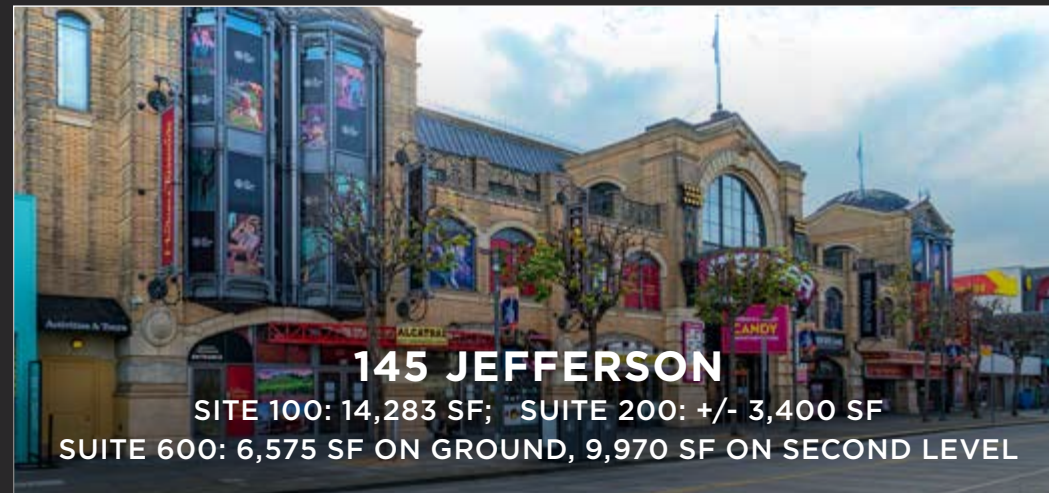


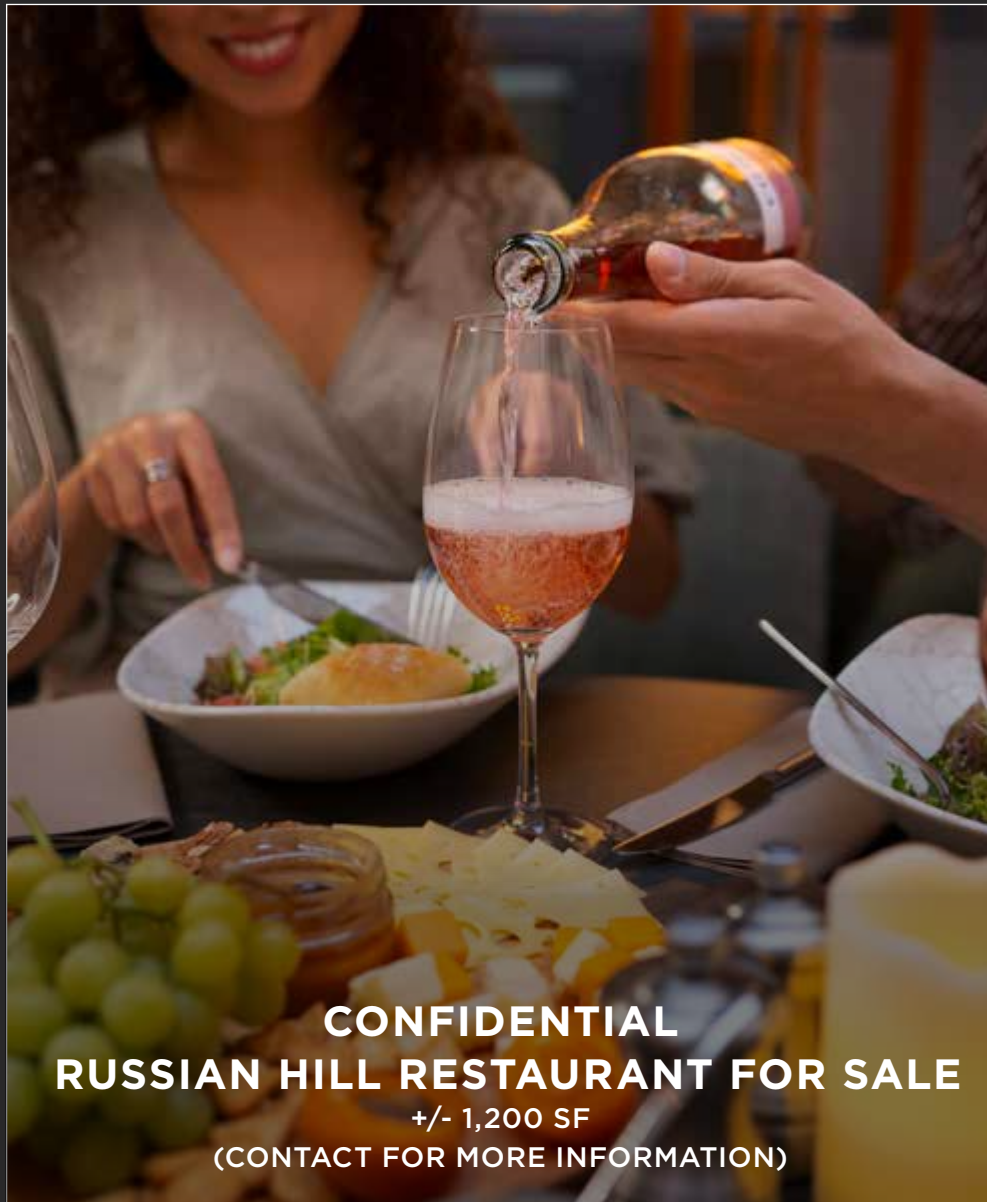
FOOD & BEVERAGE OPPORTUNITIES NORTH NEIGHBORHOODS

FALL 2024

maven
RETAIL







**CONFIDENTIAL
RUSSIAN HILL RESTAURANT FOR SALE**
+/- 1,200 SF
(CONTACT FOR MORE INFORMATION)



665 MARKET
+/- 3,975 SF + 1,000 SF BASEMENT



PIER 38
UP TO 20,000 SF

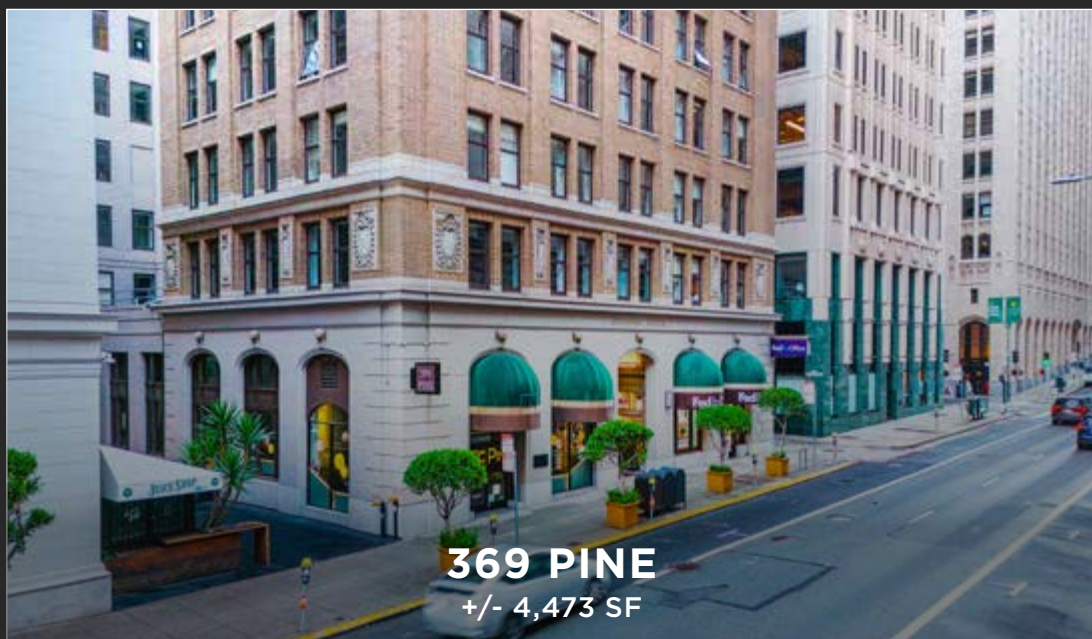


347 GEARY
+/- 7,572 SF ON GROUND + 5,100 SF BASEMENT

maven
RETAIL



1828 DIVISADERO
+/- 1,323 SF + STORAGE



369 PINE
+/- 4,473 SF



**MARINA RESTAURANT
FOR SALE (CONFIDENTIAL)**
+/- 1,980 SF
(CONTACT FOR MORE INFORMATION)



200 PINE
SUITE 102 - 1,184 SF;
SUITE 111 - 721 SF



7 CLAUDE LANE
+/- 2,714 SF



500 PRESIDIO
+/- 2,125 SF WITH BASEMENT STORAGE



74 NEW MONTGOMERY (C2)
+/- 962 SF



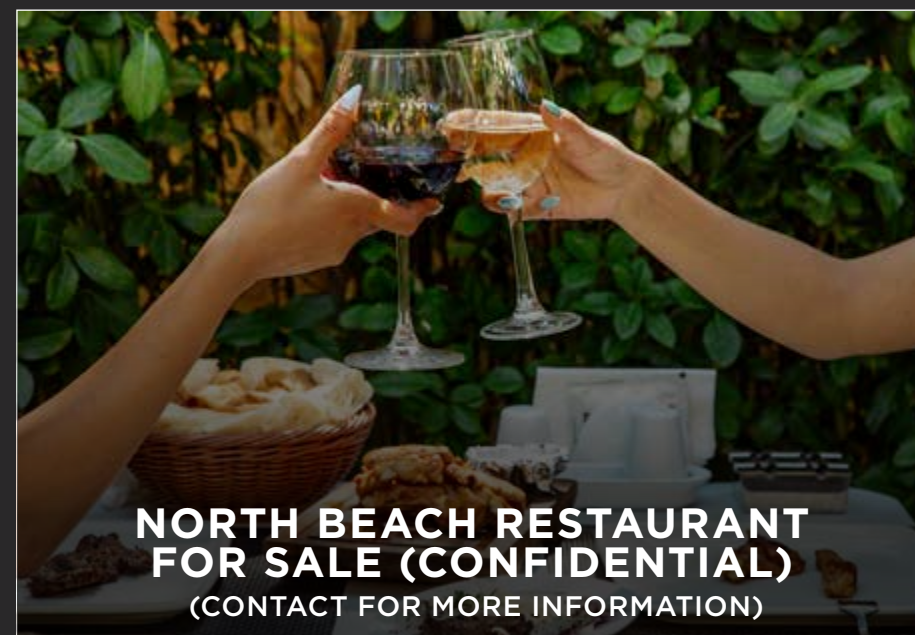
478 GREEN
+/- 3,665 SF MAIN FLOOR, 1,279 OUTDOOR PATIO,
776 SF BASEMENT, 258 SF OFFICE SPACE



1030 POLK
+/- 3,000 SF + BASEMENT



180 CHURCH
+/- 1,859 SF



**NORTH BEACH RESTAURANT
FOR SALE (CONFIDENTIAL)**
(CONTACT FOR MORE INFORMATION)



2223 MARKET
+/- 2,600 SF & 700 SF LOWER LEVEL



**ATTRACTIVE CORNER RESTAURANT
IN NOB HILL (CONFIDENTIAL)**
+/- 1,332 SF GROUND, 211 SF MEZZANINE,
AND 673 SF BASEMENT
(CONTACT FOR MORE INFORMATION)



558 SACRAMENTO
+/- 12,228 SF OVER 4 LEVELS



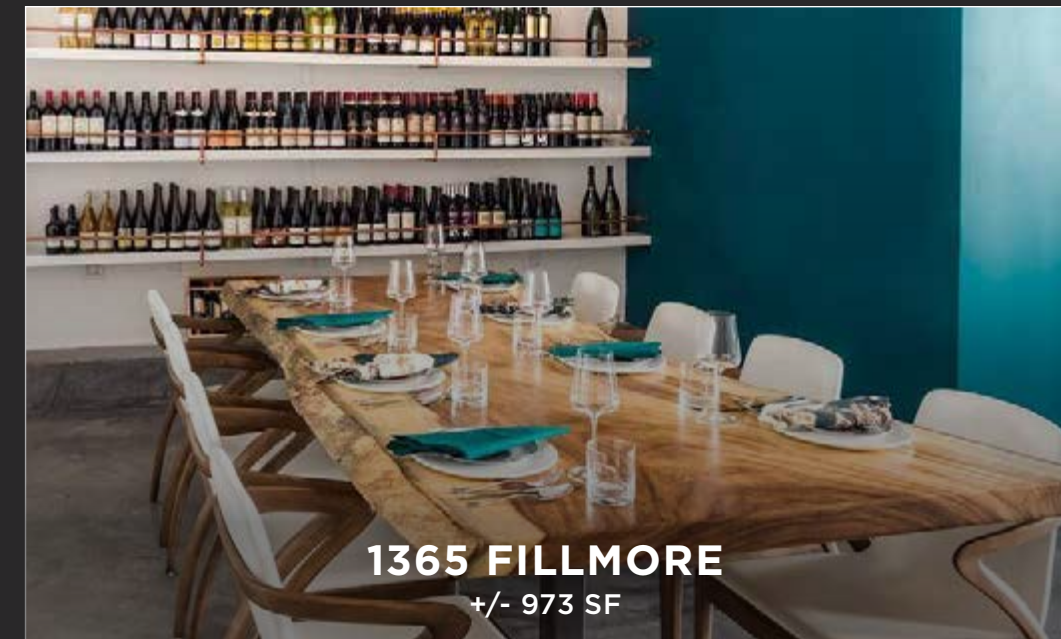
28 2ND
+/- 3,727 SF INTERIOR + 3,727 SF BASEMENT



1392 9TH AVENUE
+/- 829 SF



1511 HAIGHT
+/- 2,889 SF



1365 FILLMORE
+/- 973 SF



463 DAVIS COURT (GATEWAY)
+/- 5,025 SF



2238 MARKET
+/- 2,515 SF (CAN BE DEMISED)



1601 HAIGHT
+/- 1,166 SF + 326 SF MEZZANINE +
870 SF BASEMENT

maven
RETAIL



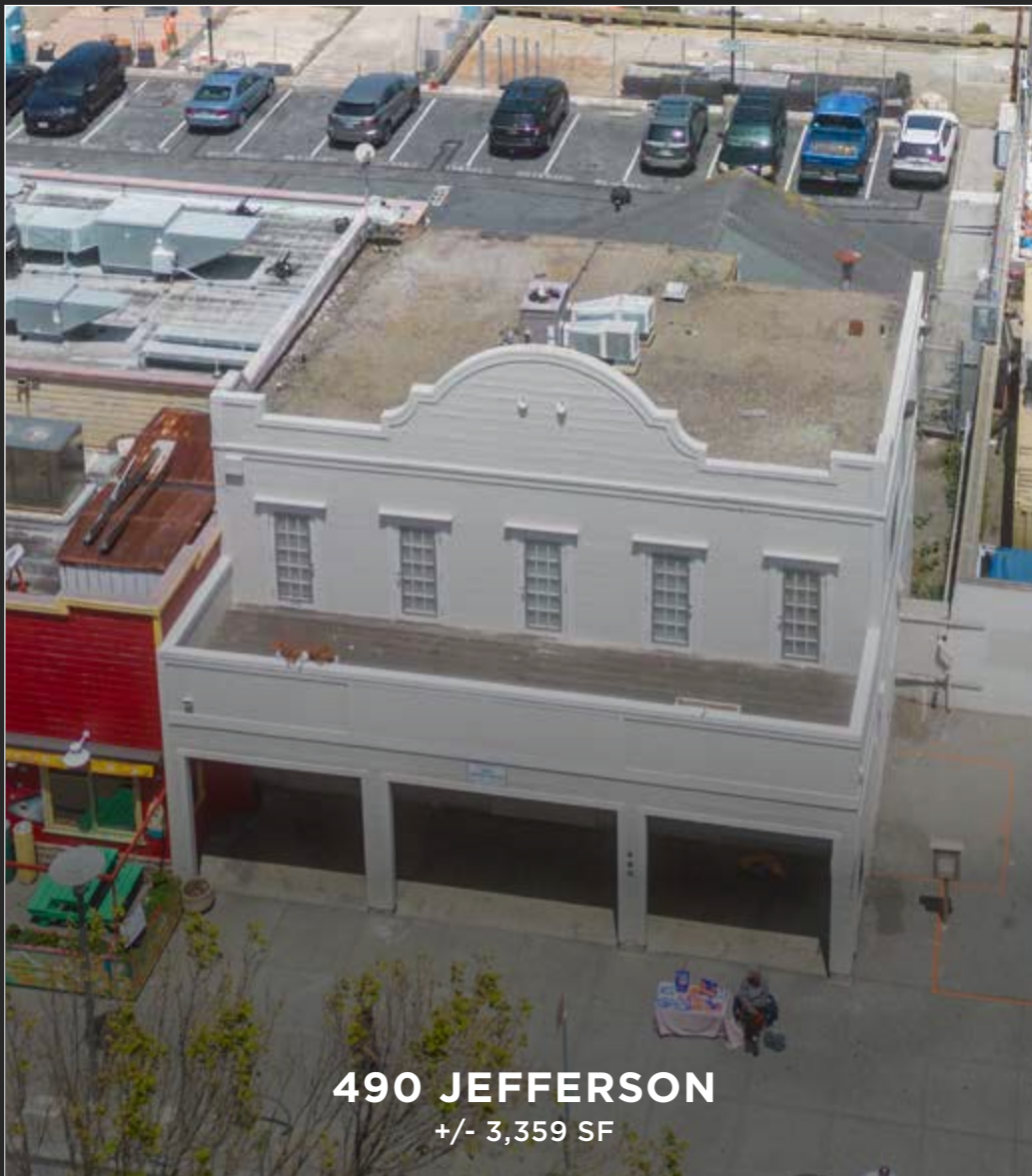
900 SUTTER
+/- 600 SF



1737 POST (JAPAN CENTER)
+/- 2,191 SF



88 BROADWAY
+/- 4,364 SF + OUTDOOR SEATING



490 JEFFERSON
+/- 3,359 SF



1699 MARKET
+/- 1,000 SF TO 4,000 SF (CAN BE DEMISED)



8 FISHERMAN'S WHARF
+/- 11,414 SF

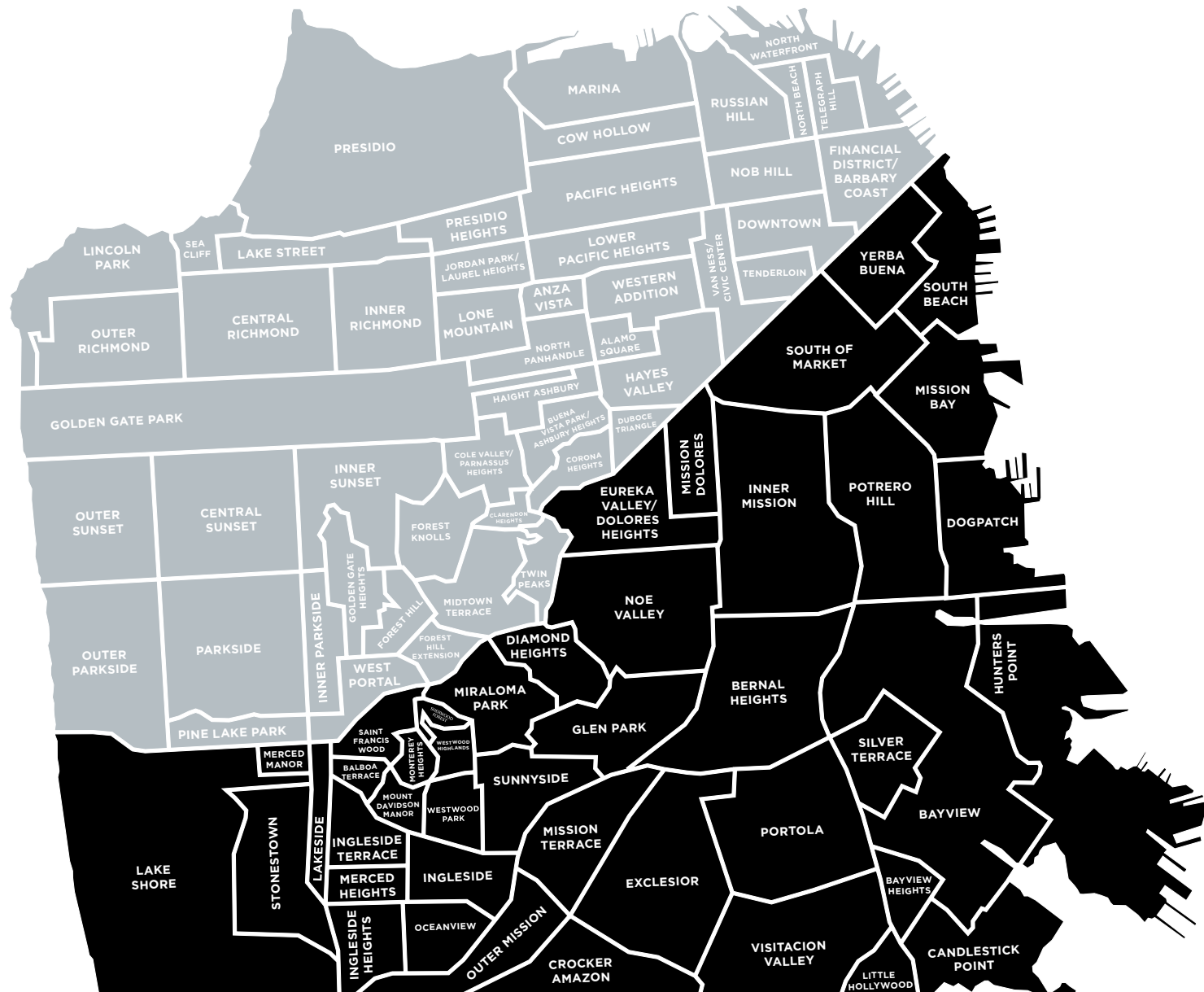


311 CALIFORNIA
+/- 1,898 SF

FOOD & BEVERAGE OPPORTUNITIES SOUTH NEIGHBORHOODS

FALL 2024

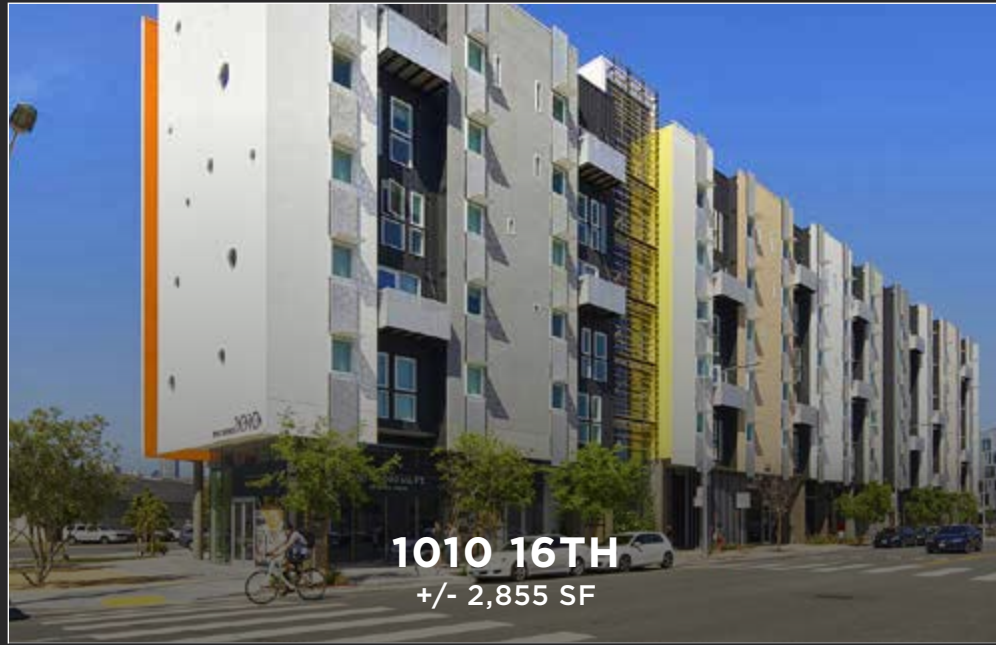
maven
RETAIL



399 FREMONT
+/- 3,500 SF



198 UTAH
+/- 3,784 SF ON GROUND & 2,555 SF MEZZANINE



1010 16TH
+/- 2,855 SF



885 BRYANT
+/- 1,500 SF



1 MISSION BAY
+/- 1,736 SF



FOR SALE
CONFIDENTIAL SOMA BRICK & TIMBER RESTAURANT
+/- 3,000 SF (CONTACT FOR MORE INFORMATION)



680 VALENCIA
+/- 4,500 SF ON GROUND AND 1,500 SF MEZZANINE



maven
RETAIL



2211 MISSION
+/- 3,000 SF + OUTDOOR SEATING



3101 24TH
+/- 1,712 SF



2937 24TH
+/- 2,950 SF + ADDITIONAL STORAGE



12 VALENCIA
+/- 2,842 SF



4063 18TH
+/- 2,571 SF + OUTDOOR SEATING

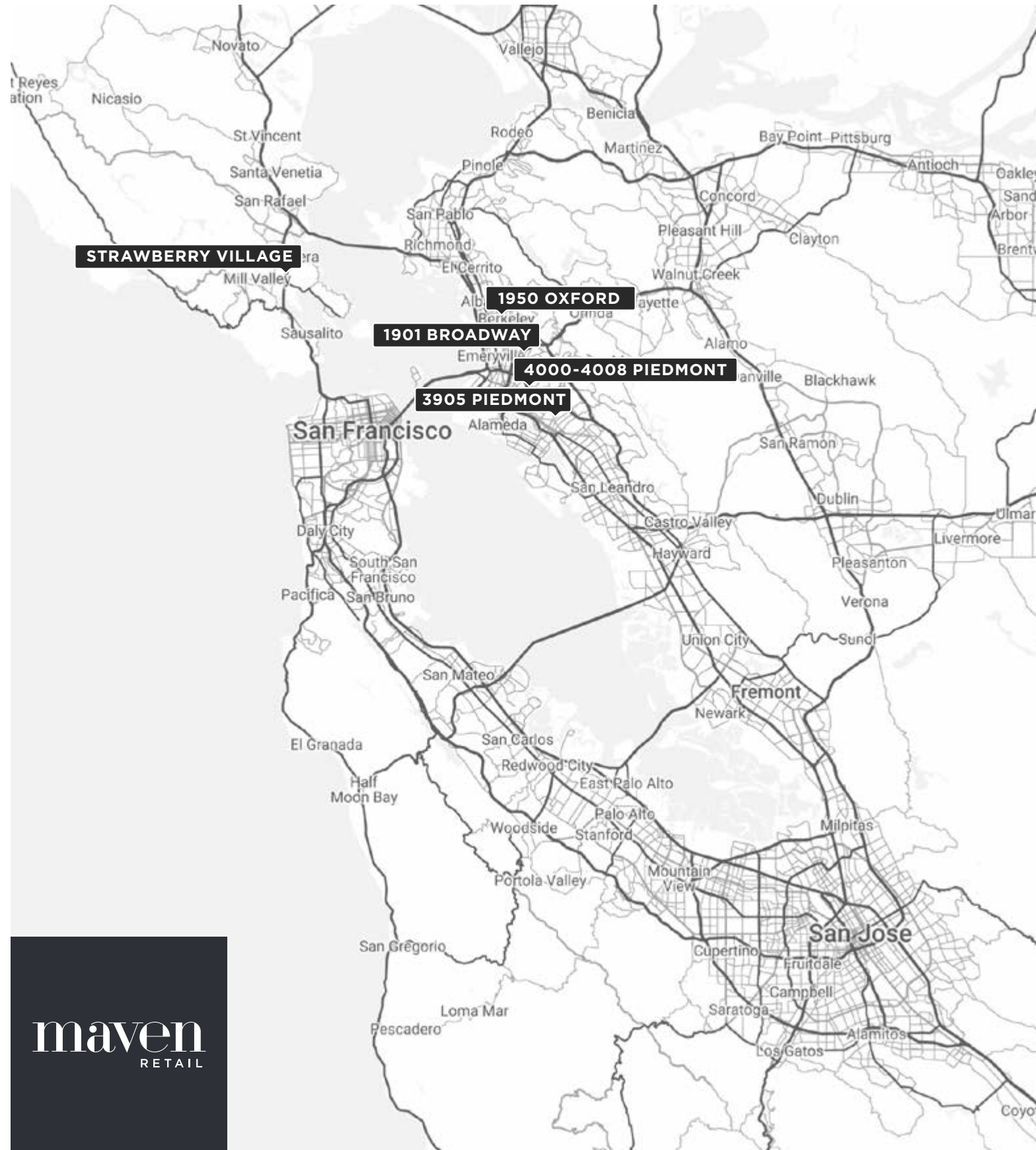


301 KING, SUITE A
+/- 4,736 SF

FOOD & BEVERAGE OPPORTUNITIES

OTHER BAY AREA CITIES

FALL 2024



maven
RETAIL

PAM MENDELSON
office 415.404.6650
pam@mavenproperties.com
DRE #00953050

HALEY KLEIN
office 415.404.7330
haley@mavenproperties.com
DRE #01907308

CATHERINE MEUNIER
office 415.806.5566
catherine@mavenproperties.com
DRE #01843732

ALI MCEVOY
office 415.404.7343
ali@mavenproperties.com
DRE #01930635

KRYSTAL CHANNICK
office 858.231.2219
krystal@mavenproperties.com
DRE #01969079

DOMINIC MORBIDELLI
office 415.404.7314
dom@mavenproperties.com
DRE #02024348

SANTINO DEROSE
office 415.404.7337
sd@mavenproperties.com
DRE #01338326

JOAN RUYLE
office 415.404.7313
joan@mavenproperties.com
DRE #02006025

GLORIA NORDBAKK
office 415.225.0626
gloria@mavenproperties.com
DRE #02207407

MARK FRY
office 415.404.6959
mark@mavenproperties.com
DRE #02068463

KAREN LIM
office 650.796.5784
karen@mavenproperties.com
DRE #02026568

SAGE MIRSKY
office 907.821.1049
sage@mavenproperties.com
DRE #02238781

NOTICE: This information has been secured from sources we believe to be reliable but we make no representations, warranties, express or implied, as to the accuracy of the information. Listing broker has been given enough information to provide only a preliminary interest in the property. The materials are not to be considered fact. The information contained herein is not a substitute for thorough due diligence investigation. References to square footage, zoning, use, or age are approximate. Please contact the San Francisco Planning Department to verify zoning at (415) 558-6378, as neither broker or landlord represent that this space is suitable for your use. Tenant or Buyer must verify the information at their own expense and bears all the risk for any inaccuracies. By receiving these materials you are agreeing to the disclaimers set forth herein. DRE#01878802