

# LUXURY / CURATED

VT VIRTUAL TOUR

maven  
RETAIL

**PAMELA MENDELSON**  
office 415.404.6650  
pam@mavenproperties.com  
DRE #00953050

**LORRAINE ADNEY**  
office 312.420.1772  
lorraine@mavenproperties.com

**CATHERINE MEUNIER**  
office 415.806.5566  
catherine@mavenproperties.com  
DRE #01843732

**ALI MCEVOY**  
office 415.404.7343  
ali@mavenproperties.com  
DRE #01930635

**HALEY KLEIN**  
office 415.404.7330  
haley@mavenproperties.com  
DRE #01907308

**JOAN RUYLE**  
office 312.420.1772  
joan@mavenproperties.com  
DRE #00953050

**KRYSTAL CHANNICK**  
office 415.462.5940  
krystal@mavenproperties.com  
DRE #01969079

**SANTINO DEROSE**  
office 415.404.7337  
sd@mavenproperties.com  
DRE #01338326

**GLORIA NORDBAKK**  
office 415.225.0626  
gloria@mavenproperties.com  
DRE #02207407



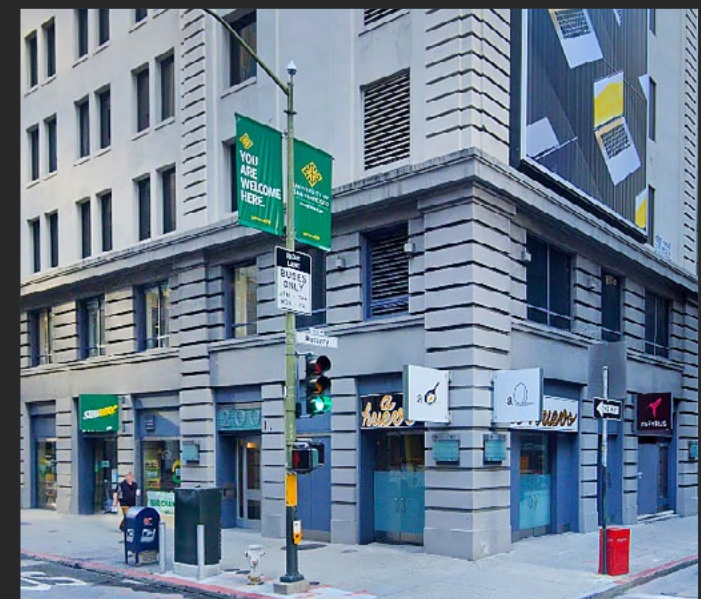
**135 POST | UNION SQUARE | SF**  
10,000 SF Ground + 12,000 SF Second Level



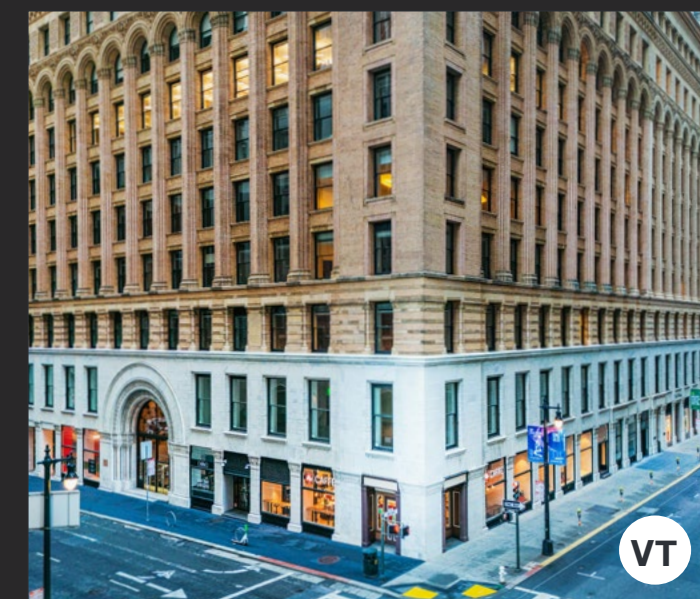
**332 PINE | FIDI | SF**  
5,370 SF



**175 POST | UNION SQUARE | SF**  
5,500 SF Ground & 1,200 SF Basement



**200 PINE | UNION SQUARE | SF**  
1,184 SF & 721 SF



**220 MONTGOMERY | FIDI | SF**  
4,117 SF



**722 MONTGOMERY | FIDI | SF**  
1,663 SF Ground + 1,704 SF Basement (optional)



**369 PINE | FIDI | SF**  
4,473 SF



**60 GRANT | UNION SQUARE | SF**  
+/- 800 SF



**150 POST | UNION SQUARE | SF**  
6,444 SF Ground



**558 SACRAMENTO | FIDI | SF**  
+/- 12,228 SF OVER 5 LEVELS



**1919 FILLMORE | PACIFIC HEIGHTS | SF**  
+/- 1,750 SF



**950 MARKET | MID MARKET | SF**  
6,000 SF Ground



**59 GRANT | UNION SQUARE | SF**  
+/- 1,625 SF



**80 GRANT | UNION SQUARE | SF**  
+/- 4,000 SF



**139 TOWNSEND | SOUTH BEACH | SF**  
6,201 SF



**333 PINE | FIDI | SF**  
4,988 SF



**2225 FILLMORE | PACIFIC HEIGHTS | SF**  
+/- 2,000 SF + 400 SF Mezzanine



**345-343 SUTTER | UNION SQUARE | SF**  
1,321 SF & 2,700 SF



**ONE MISSION BAY | DOGPATCH | SF**  
6,471 SF



**231 GRANT | UNION SQUARE | SF**  
Square Footage to be Confirmed



**75 GEARY | UNION SQUARE | SF**  
+/- 792 SF



**58 GEARY | UNION SQUARE | SF**  
+/- 3,549 SF on ground + 1,594 SF lower level



**217 POWELL | UNION SQUARE | SF**  
2,500 - 5,000 SF



**2224 UNION | COW HOLLOW | SF**  
3,000 SF - 7,040 SF