



822 IRVING STREET
SAN FRANCISCO | CA

RESTAURANT OPPORTUNITY
+/- 1,714 SF

maven
RETAIL

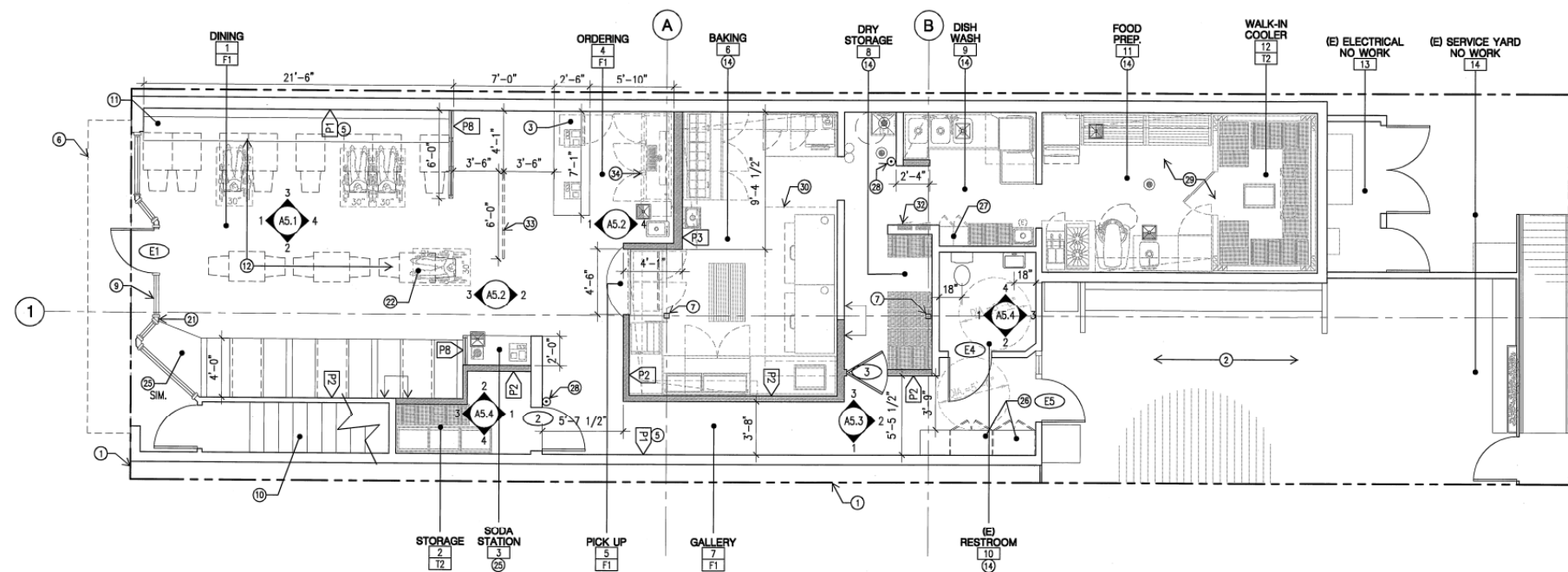
FEATURES

Ground Floor restaurant space located on Irving Street between 9th and 10th Avenue. The existing restaurant features a Type 1 hood, and includes 1,714 square feet of ground floor area, a 724 square foot rear patio, and a spacious parklet. The restaurant is in close proximity to Golden Gate Park, public transportation and all of the shops and restaurants located on the popular 9th and Irving Street corridor.

- +/- 1,714 SF ground floor restaurant
- +/- 724 SF private back patio for seating
- 1 block from Golden Gate Park
- Easy Access with Public Transportation
- Great opportunity for Tenant Branding
- Sunday Farmers Market is kitty corner to the location
- Nearby shops and eateries include Underdog's, Fiorella, Tartine Inner Sunset, Ebisu, LaLe, Fresca, Arizmendi, United States Post Office, Bank of America, Andronico's, and more.



Floor Plans



Inner Sunset

The Sunset District is San Francisco's largest neighborhood, often referred to by locals as the "Avenues." Touching both the Pacific Ocean and Golden Gate Park, the Sunset abuts the California Academy of Sciences, the de Young Museum, the Conservatory of Flowers, and the San Francisco Botanical Garden. Entertainment is key in the Sunset with events such as Outside Lands Festival, Hardly Strictly Bluegrass, and live music at Stern Grove. And a trip to the Sunset is not complete without stopping for lunch or a coffee on Irving Street. Irving Street is San Francisco's main retail corridor and features well-known national retailers and eateries as well as some of San Francisco's best local and hidden gems.



THE GAME PARLOUR



FIGORELLA



LALE



TARTINE



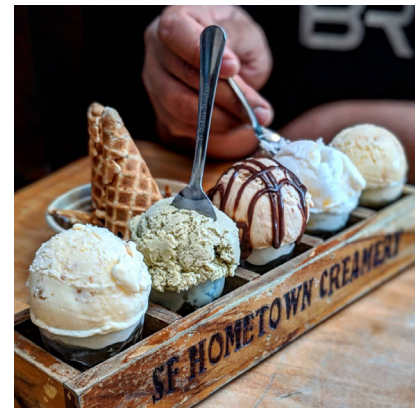
ARIZMENDI BAKERY



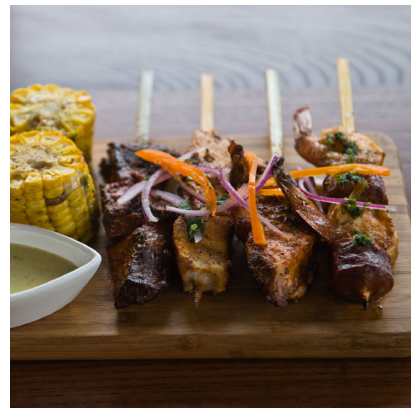
STARBUCKS



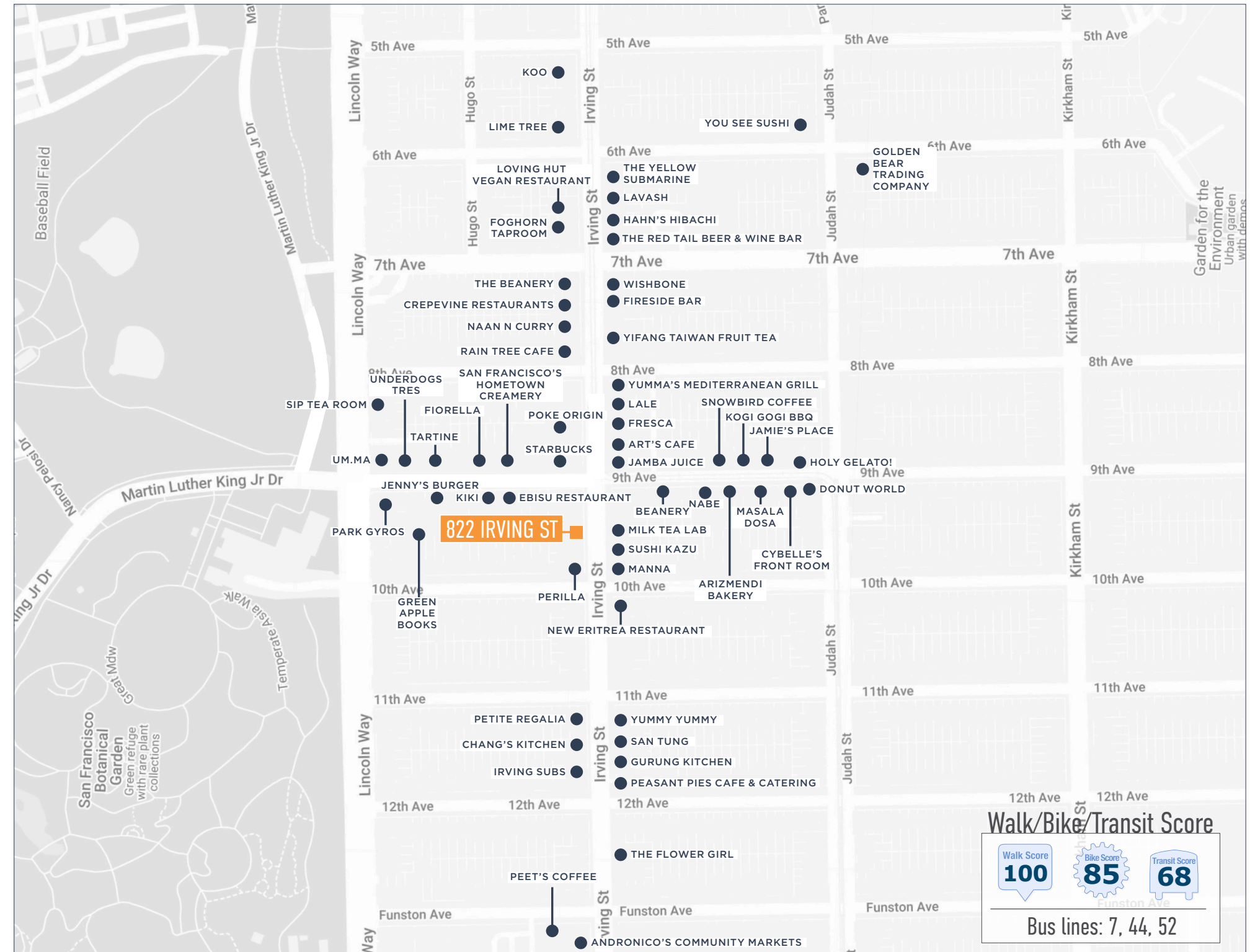
EBISU RESTAURANT



**SAN FRANCISCO'S
HOMETOWN CREAMERY**



FRESCA





maven
RETAIL

CATHERINE MEUNIER

office 415.462.7679

catherine@mavenproperties.com

DRE #01843732

822 IRVING STREET — FOR LEASE

NOTICE: This information has been secured from sources we believe to be reliable but we make no representations, warranties, express or implied, as to the accuracy of the information. Listing broker has been given enough information to provide only a preliminary interest in the property. The materials are not to be considered fact. The information contained herein is not a substitute for thorough due diligence investigation. References to square footage, zoning, use, or age are approximate. Please contact the San Francisco Planning Department to verify zoning at (415) 558-6378, as neither broker or landlord represent that this space is suitable for your use. Tenant or Buyer must verify the information at their own expense and bears all the risk for any inaccuracies. By receiving these materials you are agreeing to the disclaimers set forth herein. DRE#01878802

466 Green Street Suite #203 | San Francisco, CA 94133 | 415-781-7700 | www.mavenproperties.com