

*Mid Market*  
992 MARKET STREET

CAFÉ/BAR OPPORTUNITY | SAN FRANCISCO, CA



maven  
RETAIL





- **Approximately +/- 897 SF**
- **Outdoor seating potential**
- **Former café / brew pub**
- **Furniture, fixtures, and equipment in place**
- **15+ ceilings**
- **Excellent visibility**
- **Immediately adjacent to the Warfield music venue**
- **Neighbors include new IKEA concept, Line Hotel, Supreme, Saluhall, David Rio, and more!**

#### **FEATURES**

992 Market is conveniently located in the heart of San Francisco's Mid-market corridor, adjacent to both the Golden Gate and Warfield Theatre, and sandwiched in between the new Whole Foods and IKEA projects. This café/bar space features floor-to-ceiling storefront windows, and modern finishes. Nearby neighbors include David Rio Chai Bar, Supreme, Fellow Barber, Bait Shoes, Westfield, Proper Hotel, and more. Easy public transportation with BART and MUNI nearby.

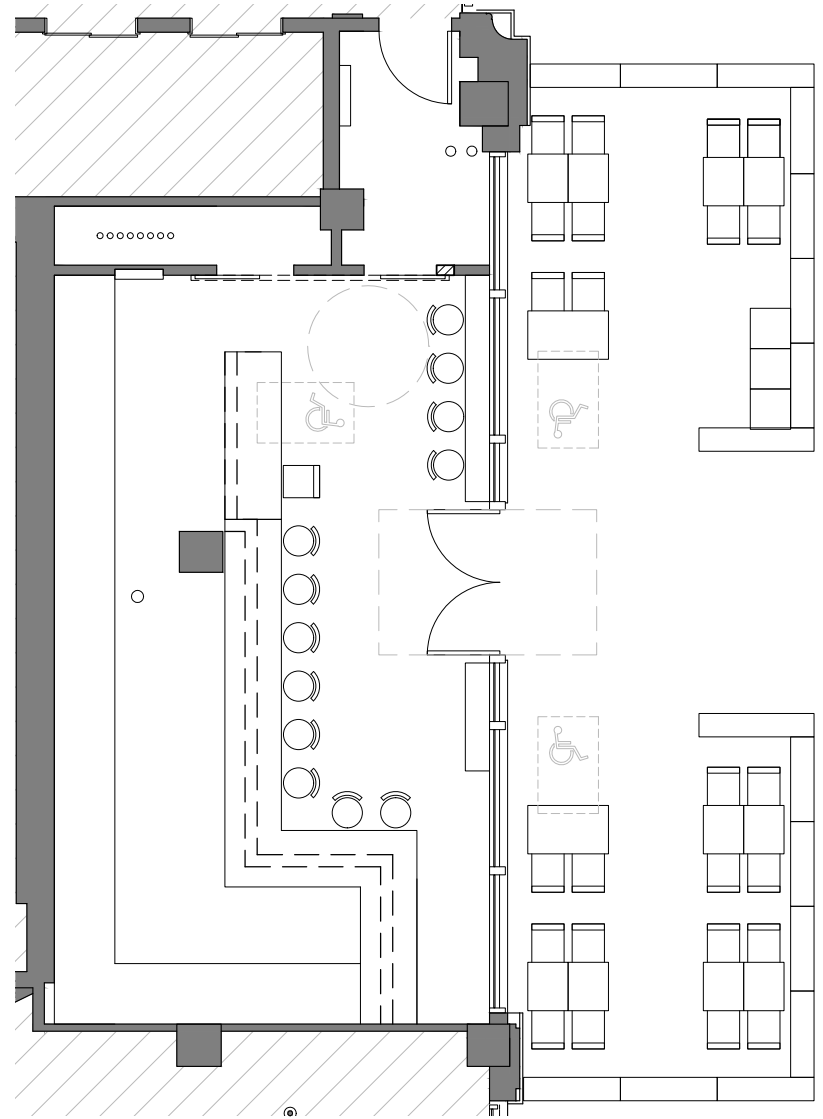








## FLOOR PLAN







992 MARKET



# NEIGHBORHOOD

## NEIGHBORHOOD

**992 MARKET**

GOLDEN GATE  
THEATRE

**Supreme**

CHARMAINE'S  
ROOFTOP BAR &  
LOUNGE

VILLON

LA BANDE

**BAIT**

COUNTERPULSE

CENTER FOR  
NEW MUSIC

THE WARFIELD

**BLICK**  
art materials

MONTESACRO

CREATE

**CHAI BAR**

THRASHER

**IKEA**

**SHI KH**

**BLUE BOTTLE  
COFFEE**

THE MELT

rack

MIKKELLER

SEPHORA

URBAN OUTFITTERS

**OAKLEY**

Dr. AirWare  
Mariens

**Levi's**

TRADER JOE'S

The Container Store

MICHAEL KORS

**ZARA**

Madewell

BANANA REPUBLIC

bloomingdale's

TED BAKER  
LONDON

**ACE**  
Hardware

Starbucks

THE MINT  
SAN FRANCISCO

WALK/BIKE/TRANSIT SCORE

**99**

WALK SCORE

**100**

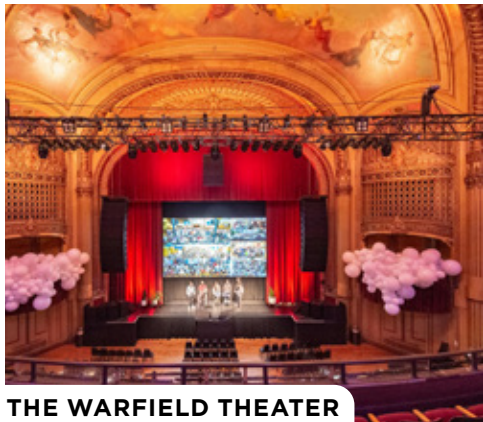
BIKE SCORE

**96**

TRANSIT SCORE

MUNI LINES: E, L, F, KT





**THE WARFIELD THEATER**



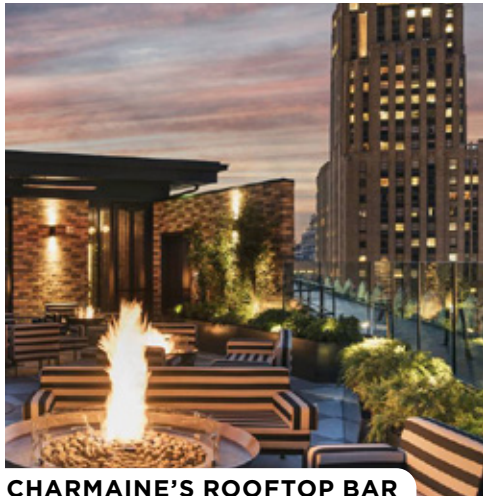
**ARSICAULT BAKERY**



**VILLON**



**GOLDEN GATE THEATER**



**CHARMAINE'S ROOFTOP BAR**



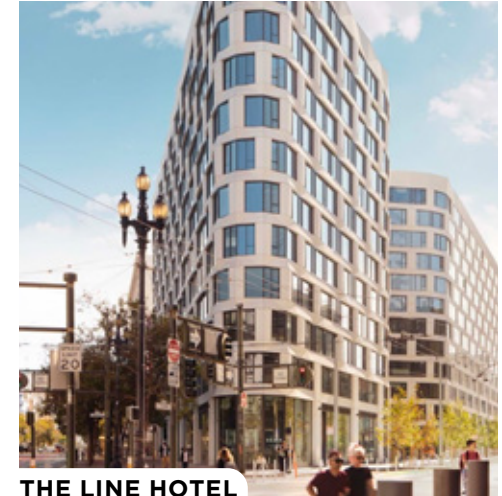
**SUPREME**



**DAVID RIO CHAI BAR**



**INTERNATIONAL ART MUSEUM**



**THE LINE HOTEL**

## MID-MARKET

Located at a 5-minute walk from the Cable Car Turn-Around and the Powell Street BART (Bay Area Rapid Transit) station on Market Street. A 10-minute walk to the Central Subway, which will ultimately pass through Chinatown, Moscone, and Mission Bay.

Only 1 block from Westfield San Francisco Center, home to over 170 shops, and a 10-minute walk to the luxury hotels and shops of Union Square. Positioned adjacent to the Warfield and Golden Gate Theatres, and down the street from the Orpheum Theatres, with nearly 7,000 combined seats. The Warfield theatre alone holds more than 150 concerts each year. Within walking distance of many of San Francisco's finest and newest hotels, as well as existing and upcoming residential projects.





## Contact

### **HALEY KLEIN**

Office 415.404.7330

[haley@mavenproperties.com](mailto:haley@mavenproperties.com)

DRE #1907308

NOTICE: This information has been secured from sources we believe to be reliable but we make no representations, warranties, express or implied, as to the accuracy of the information. Listing broker has been given enough information to provide only a preliminary interest in the property. The materials are not to be considered fact. The information contained herein is not a substitute for thorough due diligence investigation. References to square footage, zoning, use, or age are approximate. Please contact the San Francisco Planning Department to verify zoning at (415) 558-6378, as neither broker or landlord represent that this space is suitable for your use. Tenant or Buyer must verify the information at their own expense and bears all the risk for any inaccuracies. By receiving these materials you are agreeing to the disclaimers set forth herein. DRE#01878802

---

466 Green Street Suite #203  
San Francisco, CA 94133  
415-781-770  
[www.mavenproperties.com](http://www.mavenproperties.com)