



500 WASHINGTON San Francisco | CA

OFFICE/RETAIL OPPORTUNITY

2,354 SF GROUND | 970 SF MEZZANINE

JACKSON SQUARE OPPORTUNITY



Features

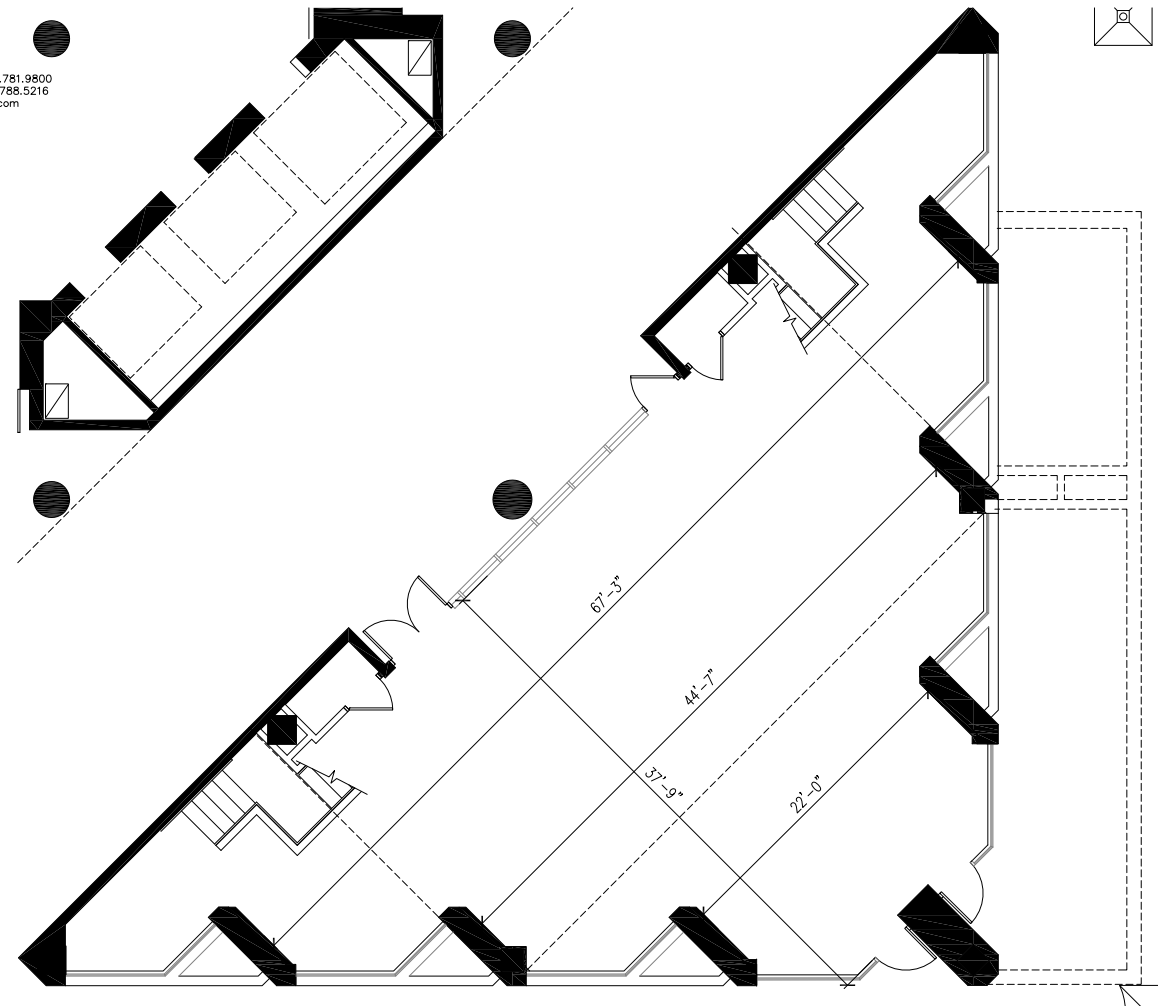
- Conveniently located at the intersection of Jackson Square and the Financial District, across the street from the world-famous Transamerica Pyramid
- Expansive rap around frontage and great visibility
- Sophisticated retail enclave which includes Isabel Marant, Zimmerman, APC, Allbirds, Filson, Shinola and many others, including art galleries, bookstores, and home furnishing boutiques
- Home to some of San Francisco's most renowned restaurants including: Kokkari, Cotogna, Verjus, Maison Nico, Quince, Tosca, Wayfare, Bix, Kusakabe and many others
- Walking Distance to the Ferry Plaza, North Beach, Chinatown, Union Square, and SOMA
- Bike parking in building
- 10 minutes walking distance to the Financial District



Floor Plans

160 Pine Street Tel 415.781.9800
San Francisco, CA 94111 Fax 415.788.5216
www.rmw.com

MEZZANINE
±970 SF



GROUND FLOOR
±2,354 SF



Jackson Square

One part of the Barbary Coast, Jackson Square now a historic district, is compliment by restaurants and retail merchants. It's situated between North beach and the Financial District with the TransAmerica building just one block away. Surrounded by top-tier dining and hospitality, convenient accessibility to transit, and located amongst a diverse mix of local, national, and international tenant mixes, 500 Washington has it all to offer. Neighbors include various high-end fashion, trending cafes and restaurants and tech-savvy businesses, government affiliated businesses, high end bar concepts, fine dining establishments and much more.



COTOGNA



KUSAKABE



VERJUS



ALLBIRDS



ROKA AKOR



ZIMMERMANN



WAYFARE TAVERN



ISABEL MARANT



SHINOLA





maven
RETAIL

SARAH BRETT SCHWARTZ

office 415.404.6959

sarah@mavenproperties.com

DRE #01903152

PAM MENDELSON

office 415.404.6650

pam@mavenproperties.com

DRE #00953050

500 WASHINGTON — FOR LEASE

NOTICE: This information has been secured from sources we believe to be reliable but we make no representations, warranties, express or implied, as to the accuracy of the information. Listing broker has been given enough information to provide only a preliminary interest in the property. The materials are not to be considered fact. The information contained herein is not a substitute for thorough due diligence investigation. References to square footage, zoning, use, or age are approximate. Please contact the San Francisco Planning Department to verify zoning at (415) 558-6378, as neither broker or landlord represent that this space is suitable for your use. Tenant or Buyer must verify the information at their own expense and bears all the risk for any inaccuracies. By receiving these materials you are agreeing to the disclaimers set forth herein. DRE#01878802

466 Green Street Suite #203 | San Francisco, CA 94133 | 415-781-7700 | www.mavenproperties.com