



256 LAGUNA HONDA
SAN FRANCISCO | CA

FOREST HILL 6 ROOM OFFICE/RETAIL
+/- 2,063 RSF

maven
RETAIL

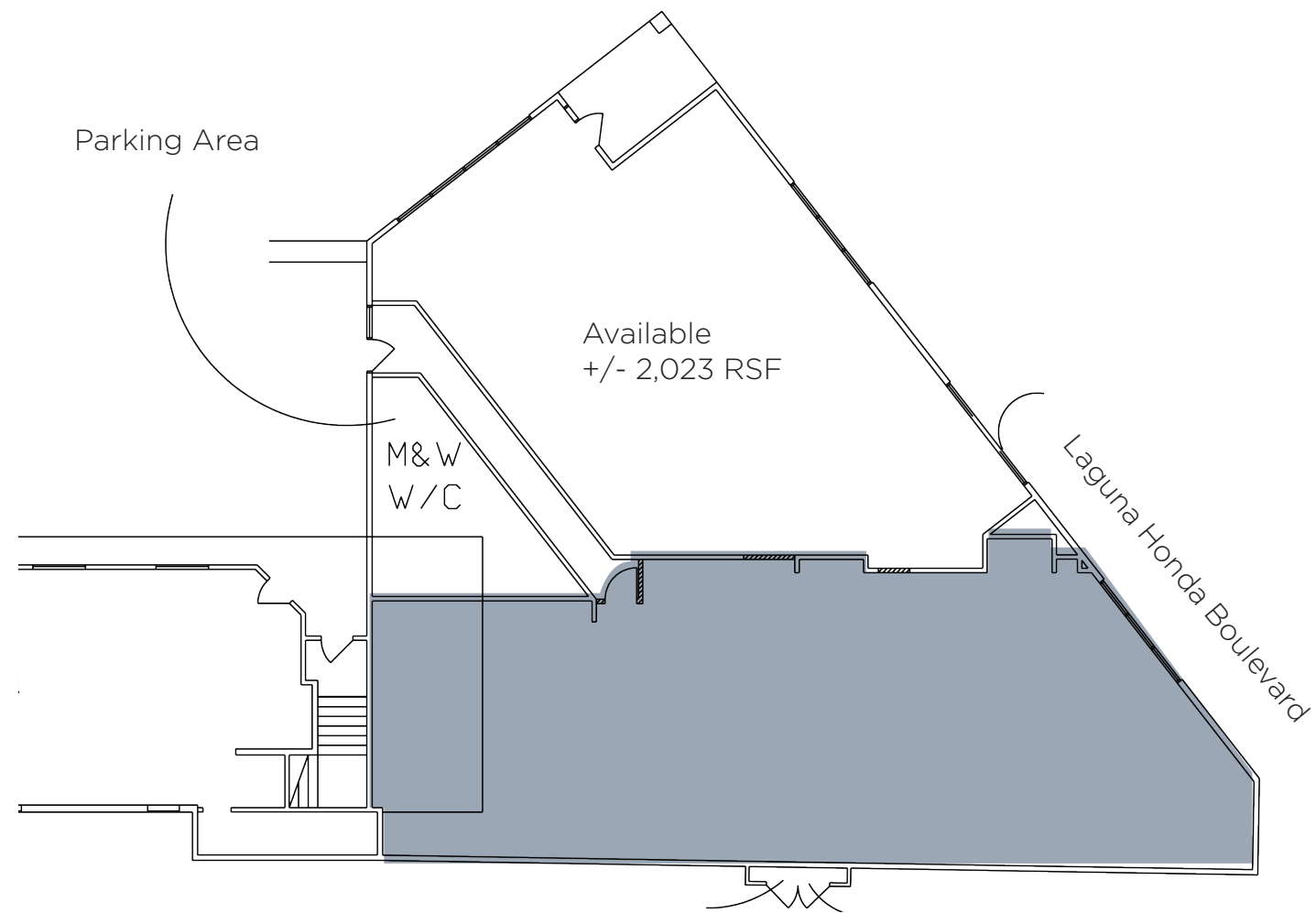
FEATURES

Forest Hill office opportunity in small neighborhood office complex. This ground floor space provides easy access to public transportation and may include 2-3 parking spaces on site. The space features abundant natural light with big windows along the property line. The exterior wall faces Laguna Honda Boulevard and provides an excellent opportunity for signage. Attractive space in a charming San Francisco location.

- +/- 2,063 RSF
- Spacious office
- All uses considered
- Great Signage Opportunity
- Ground Floor
- High Ceilings
- 1-2 car parking (negotiable)
- Close to Forest Hill Train Station

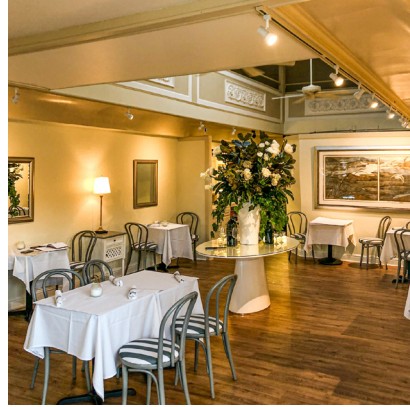


Floor Plans



Forest Hill

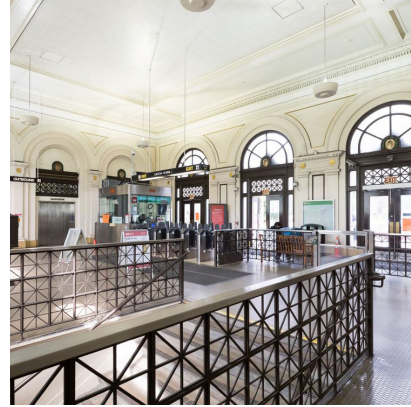
256 Laguna Honda is located in San Francisco's Forest Hill district which is near the middle of the City of San Francisco just southeast of the Inner Suent and northeast of West Portal. While relatively small and sometimes overlooked due to its dense residential capacity, Forest Hill features a few well-known San Francisco landmarks such as the Laguna Honda Hospital and Laguna Honda Hiking Trails. This property is also easily accessible via public transportation as it's just steps away from the Forest Hill Train Station that services multiple MUNI lines.



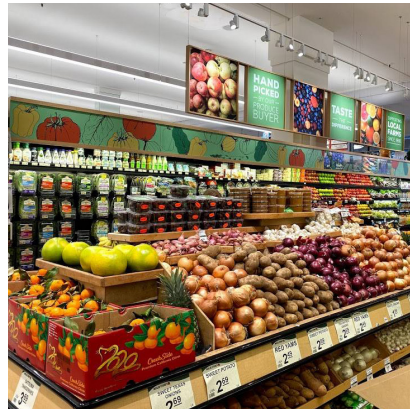
CHOUCHOU FRENCH BISTRO



LAGUNA HONDA HOSPITAL



FOREST HILL TRAIN STATION



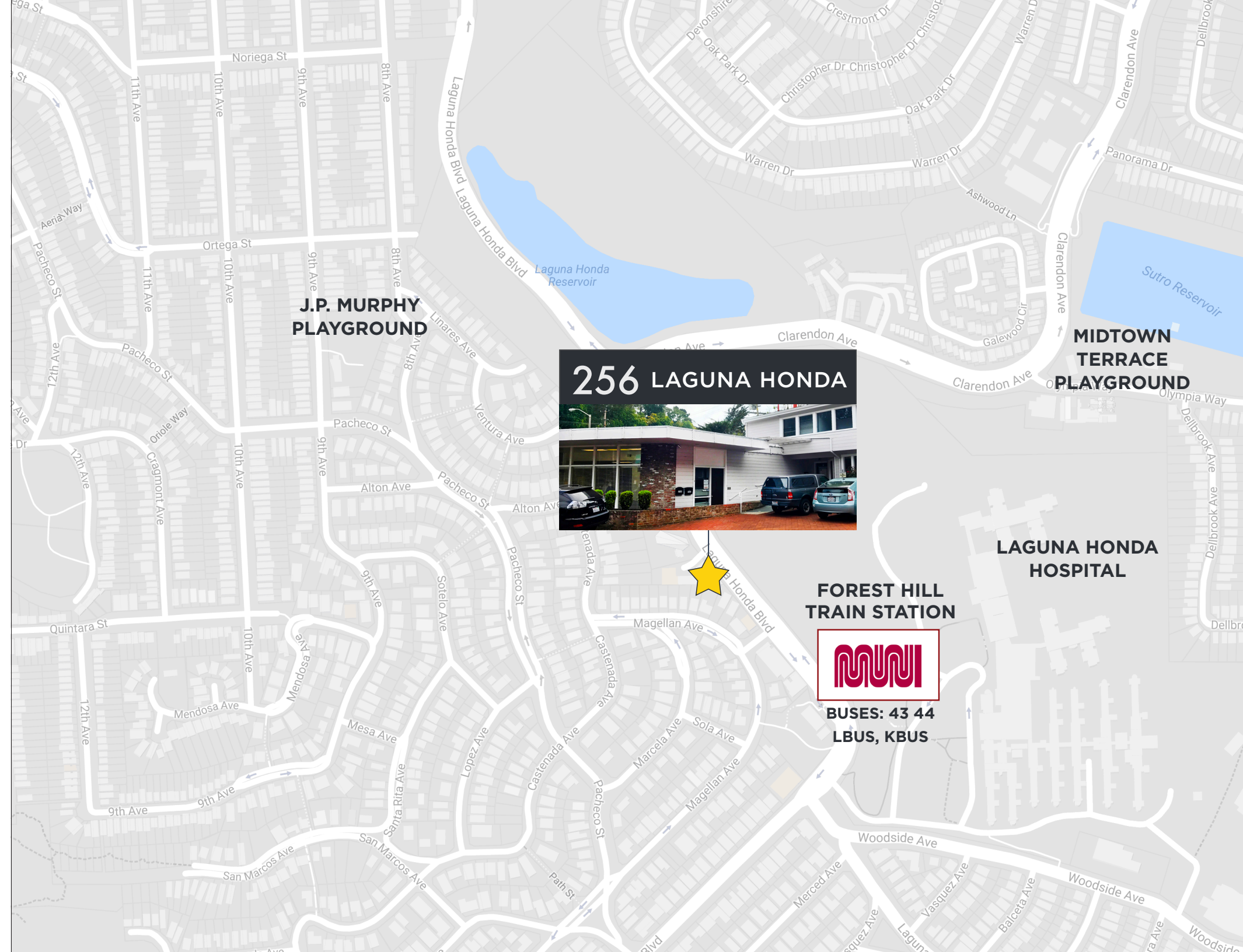
MOLLIE STONE'S MARKET



LAGUNA HONDA TRAILS



SMILES AND HUGS PRESCHOOL



The logo for Maven Retail, featuring the word "maven" in a lowercase serif font above the word "RETAIL" in a smaller, uppercase sans-serif font, all contained within a dark square.

maven
RETAIL

DOMINIC MORBIDELLI

office 415.404.7314

dom@mavenproperties.com

DRE #02024348

2137 LOMBARD — FOR LEASE

NOTICE: This information has been secured from sources we believe to be reliable but we make no representations, warranties, express or implied, as to the accuracy of the information. Listing broker has been given enough information to provide only a preliminary interest in the property. The materials are not to be considered fact. The information contained herein is not a substitute for thorough due diligence investigation. References to square footage, zoning, use, or age are approximate. Please contact the San Francisco Planning Department to verify zoning at (415) 558-6378, as neither broker or landlord represent that this space is suitable for your use. Tenant or Buyer must verify the information at their own expense and bears all the risk for any inaccuracies. By receiving these materials you are agreeing to the disclaimers set forth herein. DRE#01878802

466 Green Street Suite #203 | San Francisco, CA 94133 | 415-781-7700 | www.mavenproperties.com