

737-747 BEACH STREET SAN FRANCISCO, CA

FULL BUILDING OPPORTUNITY



FEATURES:

BUILDING

- +/- 10,944 SF on two levels
- Located on San Francisco's magnificent shoreline
- Unobstructed views of the San Francisco Bay
- C-2 Zoning / Formula Retail OK
- High ceilings throughout
- Over 100 linear feet of window line

GROUND FLOOR

- +/- 5,702 SF
- Elegant façade with 14 ft sliding-door entrance
- Illuminated storefront
- High ceilings
- Clear open space with back office and storage areas
- Excellent signage opportunity

UPPER FLOOR

- +/- 5,242 SF + storage
- High, vaulted ceilings
- Skylights
- Abundant sunlight throughout the entire space
- Hardwood floors
- Kitchenette
- Current space divided into individual office and conference rooms
- Excellent potential for an open floor plan
- Bonus storage areas

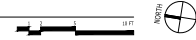


737-747 BEACH STREET • Features + Floorplans

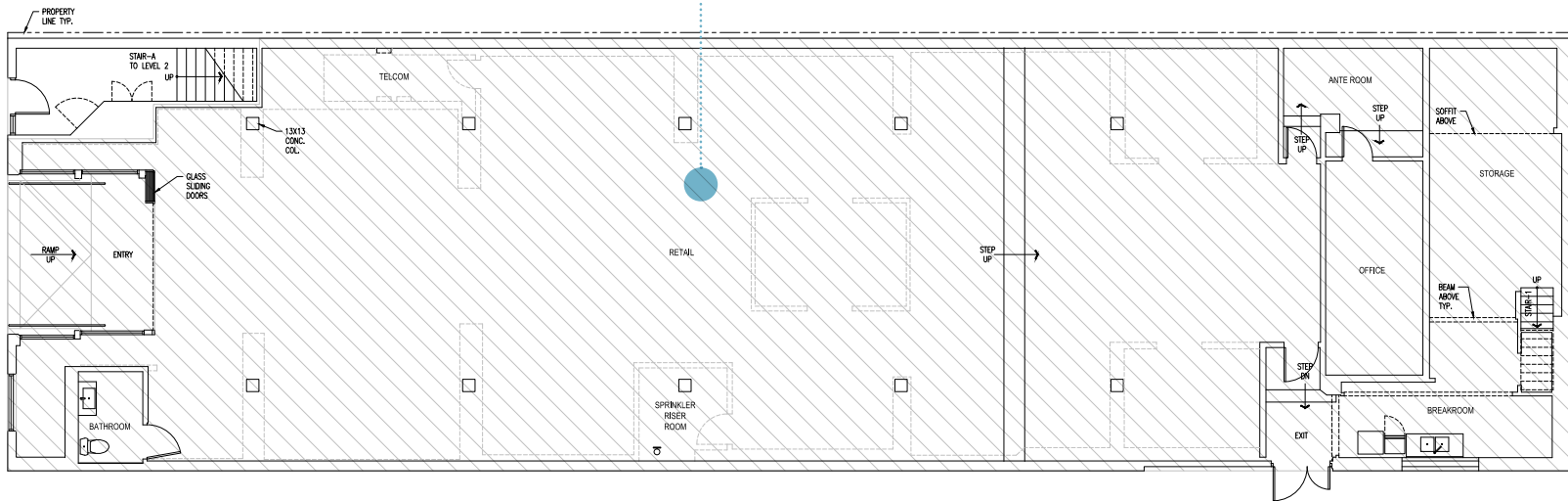
BEACH STREET



1B MEZZANINE PLAN
SCALE 1/4" = 1'-0"



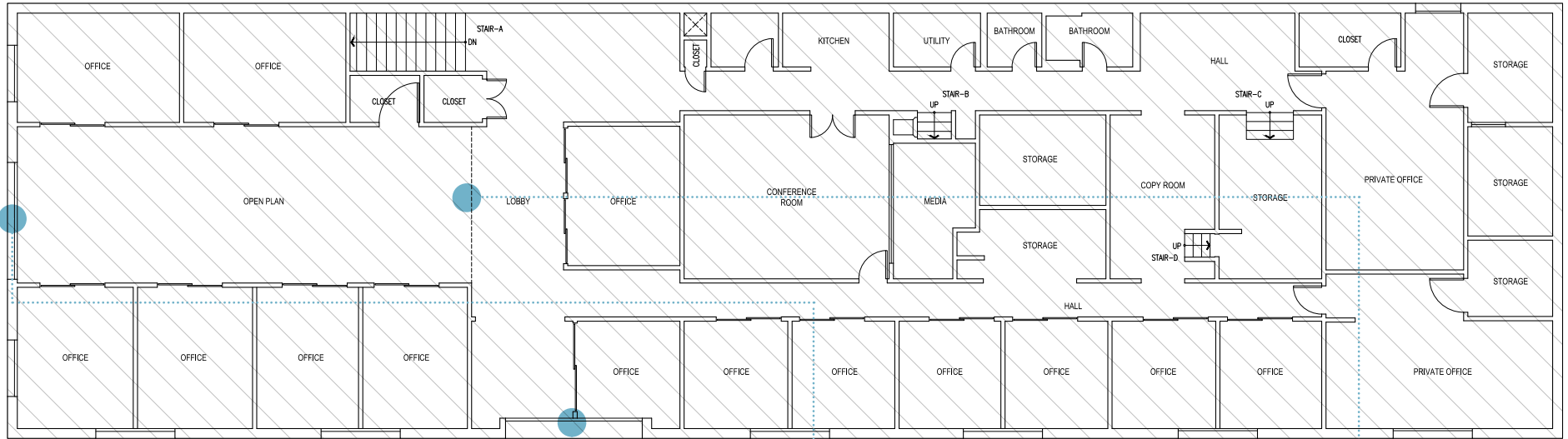
BEACH STREET



1A LEVEL 1 GROUND FLOOR PLAN
SCALE 1/4" = 1'-0"



737-747 BEACH STREET • Features + Floorplans



2A LEVEL 2 FLOOR PLAN
SCALE 1/4" = 1'-0"



737-747 BEACH STREET • Aerial Map

737-747 BEACH STREET



GHIRARDELLI SQUARE

COURTYARD BY MARRIOTT

SAN FRANCISCO MARITIME NATIONAL PARK

ARGONAUT HOTEL

THE CANNERY

JEFFERSON ST



FRANCISCO ST

BAY ST

BAY ST

BAY ST

NORTH POINT ST

NORTH POINT ST

NORTH POINT ST

BEACH ST

BEACH ST

BEACH ST

COLUMBUS AVE

Full building available on a legendary section of San Francisco's northern shoreline with unobstructed views of the San Francisco Bay. The two spacious floors, which are both filled with abundant natural light, can be leased together or separately. The total available space consists of approximately 10,944 square feet. The property is located in the flexible C-2 zoning district and landlord will consider a variety of uses. It is accessible from the North and South Bay through the Van Ness corridor (US 101) and is minutes away from the iconic Golden Gate Bridge. Nearby neighbors include Ghirardelli Square, CVS Pharmacy, Starbucks, and many exciting shops, galleries, and restaurants.





GARY DANKO



SF BREWING CO.



SCOMA'S RESTAURANT



WINERY COLLECTIVE



NEIGHBORHOOD



SURISAN



CAFE DE CASA



FOG HARBOR FISH HOUSE

737-747 BEACH STREET • *Aerial Map*



737-747 BEACH STREET

737-747 BEACH STREET

SAN FRANCISCO, CALIFORNIA

FULL BUILDING OPPORTUNITY

maven
RETAIL • OFFICE • INDUSTRIAL

JOAN RUYLE
office 415.404.7313
joan@mavenproperties.com
BRE #02024348

DOMINIC MORBIDELLI
office 415.404.7314
dom@mavenproperties.com
BRE #02024348

SANTINO DEROSE
415.404.7337
sd@mavenproperties.com
BRE #01338326

NOTICE: This information has been secured from sources we believe to be reliable but we make no representations, warranties, express or implied, as to the accuracy of the information. Listing broker has been given enough information to provide only a preliminary interest in the property. The materials are not to be considered fact. The information contained herein is not a substitute for thorough due diligence investigation. References to square footage, zoning, use, or age are approximate. Please contact the San Francisco Planning Department to verify zoning at (415) 558-6378, as neither broker or landlord represent that this space is suitable for your use. Tenant or Buyer must verify the information at their own expense and bears all the risk for any inaccuracies. By receiving these materials you are agreeing to the disclaimers set forth herein. BRE#01878802

466 Green Street Suite #203 | San Francisco, CA 94133 | 415.781.7700