



RESTAURANT/RETAIL OPPORTUNITY

3100 18TH STREET





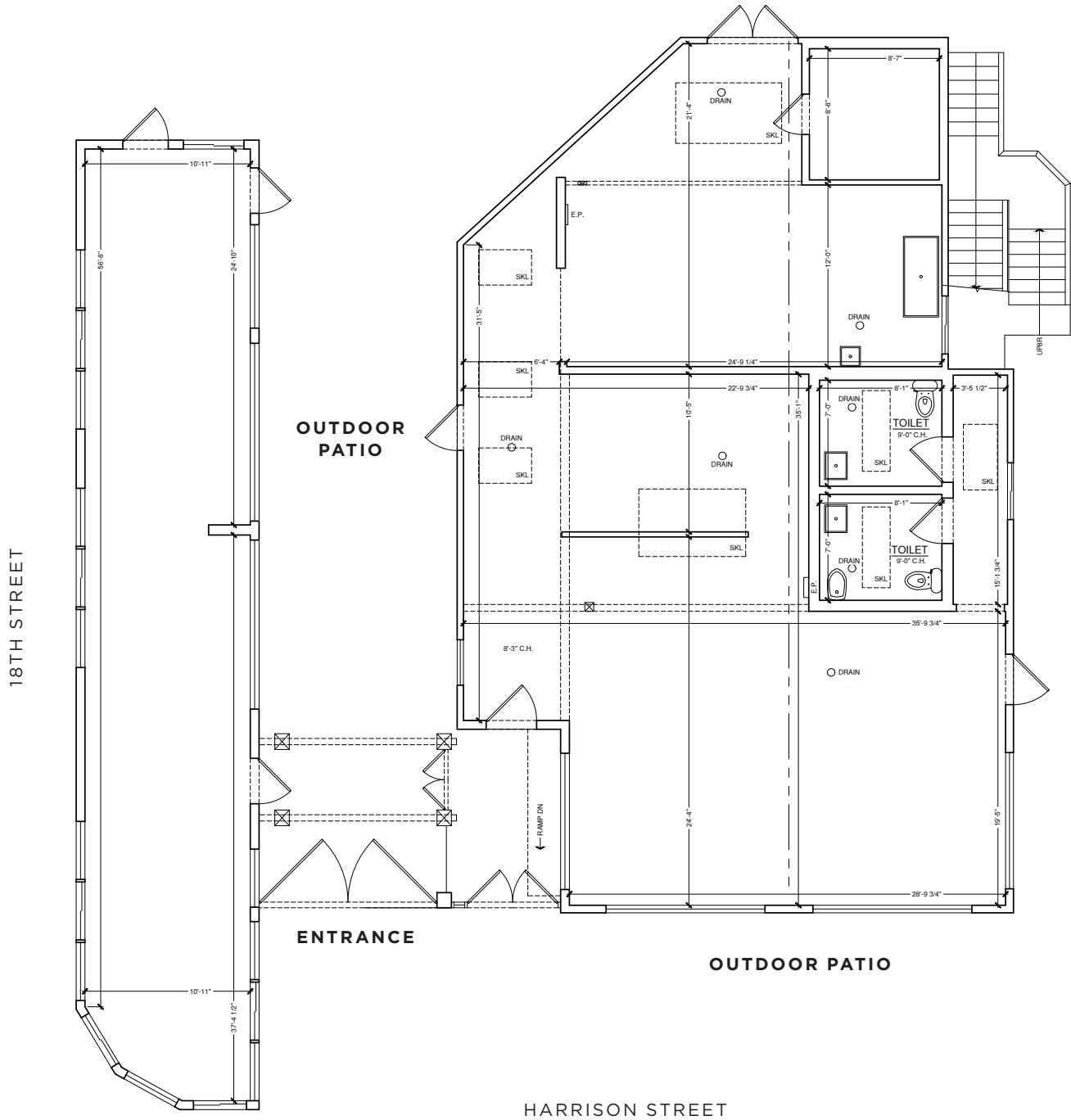
FEATURES

- Standalone building with high visibility on the corner of 18th and Harrison streets
- Main Building: 1,766 SF
- Side Building: 672 SF
- Second Level Office: 300 SF
- The property has 2,800 square feet of outdoor patio/garden space
- The space was previously configured as a restaurant but could be re-envisioned as a daycare/preschool, fitness use or even a garden center.
- The unit was impacted by a fire and is currently not operational; however, the cleanup is complete and the building now offers a blank slate for a new build-out and variety of uses.
- Full restaurant plan set is available
- Nearby neighbors include Gus's Market, Mission Cliffs, Trick Dog, Ernest and Tartine Manufactory.



FLOOR PLAN

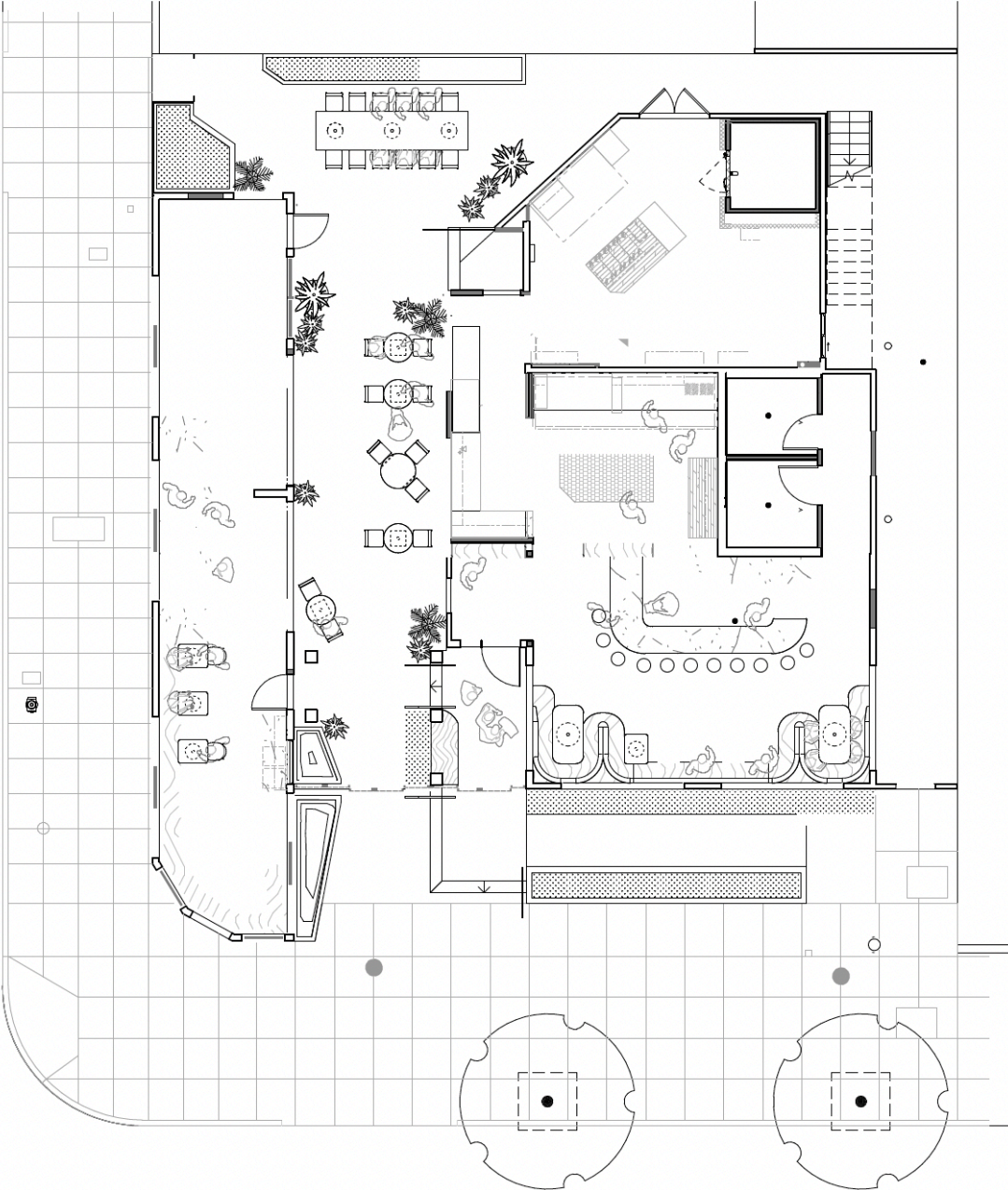
RETAIL LAYOUT



FLOOR PLAN

RESTAURANT LAYOUT

18TH STREET



HARRISON STREET

POTENTIAL USES

3100 18TH STREET



GARDEN CENTER



PRESCHOOL / NURSERY



FITNESS



RESTAURANT/CAFE

NORTH BOROHOOD



3100 18TH STREET

WALK/BIKE/TRANSIT SCORE

94 WALK SCORE **57** BIKE SCORE **100** TRANSIT SCORE

BUS LINES: 7, 12

EVERLANE

GUS'S
COMMUNITY MARKET

STONEMILL
MATCHA

ERNEST
SAN FRANCISCO

TARTINE
MANUFACTORY

the Morris
restaurant

GOOD GOOD
CULTURE CLUB

BI-RITE
CREAMERY

DANDELION
SMALL-BATCH CHOCOLATE

TARTINE

LAZY BEAR

SIGHT GLASS

MISSION CLIFF
FARMHOUSE KITCHEN
THAI CUISINE

Penny Roma

SOUTHERN PACIFIC
BREWING

SAN HO WON

Lost Resort

RITUAL
COFFEE
SAN FRANCISCO

MIXT

LIMON
ROTISSERIE

FLOUR + WATER

BON NENE

ASIENTO

DANDO DE LATTE

foreigncinema

SUSHI HON

THE LIBERTIES

PLAIN JANE

BOTTEGA

Beretta

BANK OF AMERICA

Itria

WISE SONS

HAUS COFFEE

THE SPICE JAR
comfort asian cuisine

DYNAMO
DONUT & COFFEE

LA PALMA
MEXICATESSEN

PHILZ COFFEE

HUMPHRY SLOCOMBE

KAZAN

ST FRANCIS
FOUNTAIN

JUNIOR

24TH ST MISSION
BART PLAZA

EVOLVED



TARTINE MANUFACTORY



GUS'S COMMUNITY MARKET



GARDEN CREAMERY



TRUE LAUREL



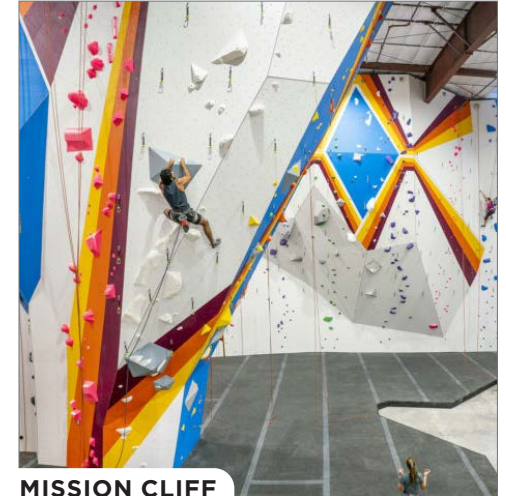
TRICK DOG



SIGHTGLASS COFFEE



THE MORRIS



MISSION CLIFF

MISSION DISTRICT

3100 18th Street is located in the Mission District.

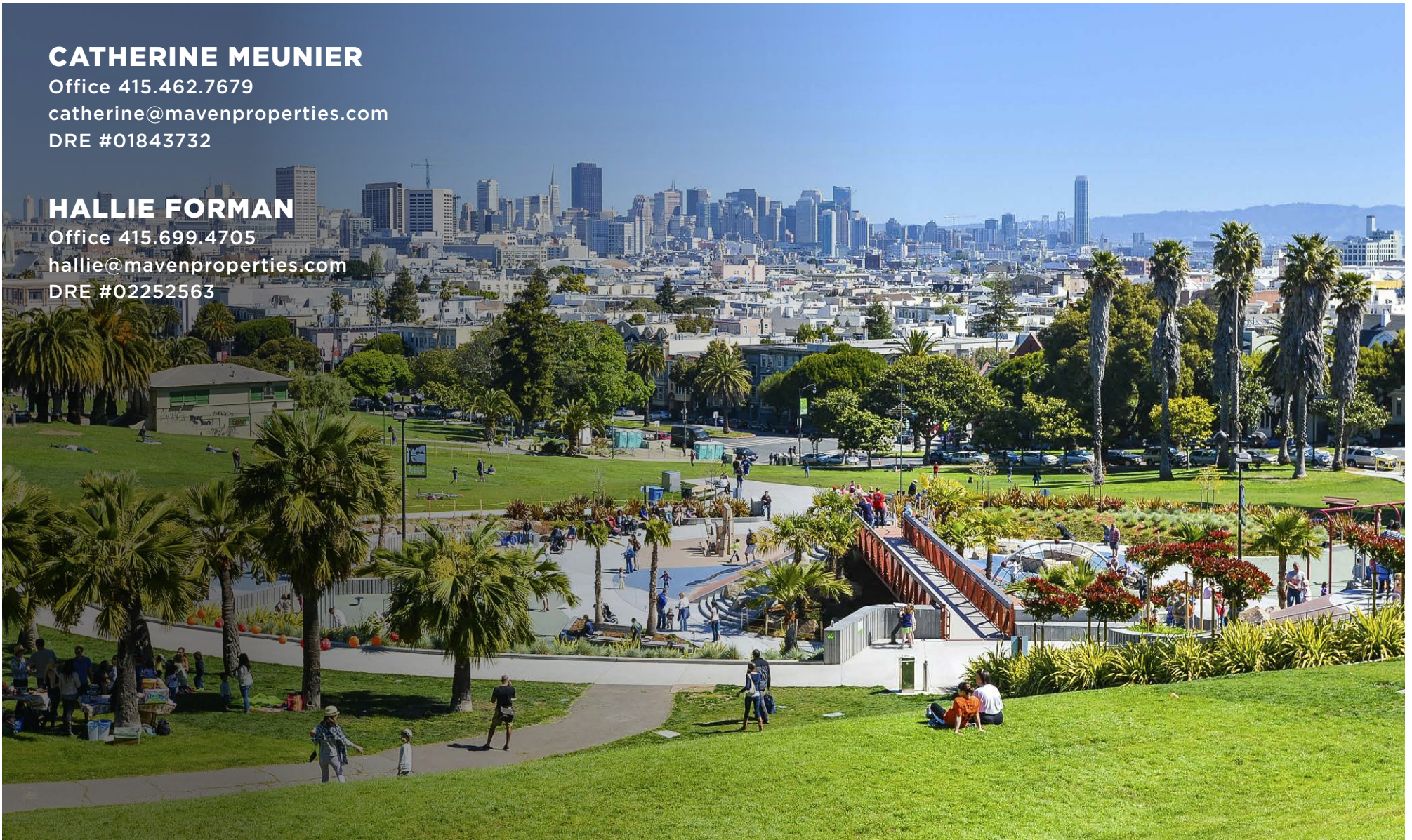
The Mission is an eclectic blend of tech, art, and culture, a ground zero for new restaurants and pop-ups. It is incredibly walkable and bike-friendly with numerous lounges, clubs & entertainment venues. Colorful hispanic heritage with all around food, parades, and more. The sunniest microclimate in San Francisco.

CATHERINE MEUNIER

Office 415.462.7679
catherine@mavenproperties.com
DRE #01843732

HALLIE FORMAN

Office 415.699.4705
hallie@mavenproperties.com
DRE #02252563



NOTICE: This information has been secured from sources we believe to be reliable but we make no representations, warranties, express or implied, as to the accuracy of the information. Listing broker has been given enough information to provide only a preliminary interest in the property. The materials are not to be considered fact. The information contained herein is not a substitute for thorough due diligence investigation. References to square footage, zoning, use, or age are approximate. Please contact the San Francisco Planning Department to verify zoning at (415) 558-6378, as neither broker or landlord represent that this space is suitable for your use. Tenant or Buyer must verify the information at their own expense and bears all the risk for any inaccuracies. By receiving these materials you are agreeing to the disclaimers set forth herein. DRE#01878802