

1|7|5|1 FULTON
STREET



maven
RETAIL

NOPA FIRST CLASS RETAIL/FITNESS OPPORTUNITY

+/- 4,258 SF



1751 FULTON STREET

Fulton Street



1|7|5|1 FULTON
STREET

- +/- 4,258 SF
- 2024 renovation
- 16' ceilings
- All new systems
- Multiple ADA complaint bathrooms, locker rooms and showers
- Significant seismic upgrades
- New polished concrete floor
- New facade
- Large storefront windows
- Vast ceilings with large skylights
- Light filled space
- Suitable for a variety of uses
- Located near University of San Francisco
- Public parking across the street
- Great visibility and signage opportunity
- Located in San Francisco's NOPA neighborhood
- Situated steps from the high traffic Masonic Corridor
- Free Public Parking across the street
- Nearby businesses include Starbucks, Papalote, Lucky Grocery, City Center, The Panhandle, Bob's Donuts, Matching Half, Early to Rise, Bistro Central Parc, and many more



PAPALOTE



**NEW RESTAURANT
FROM CARLOS ALTAMIRANO**
COMING SOON

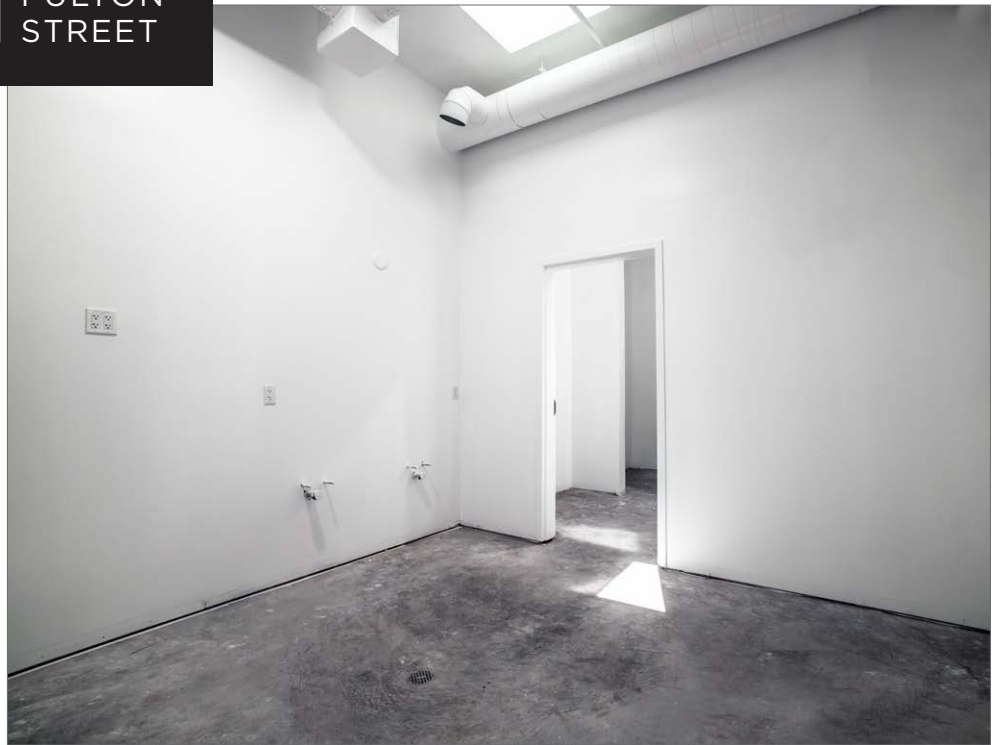
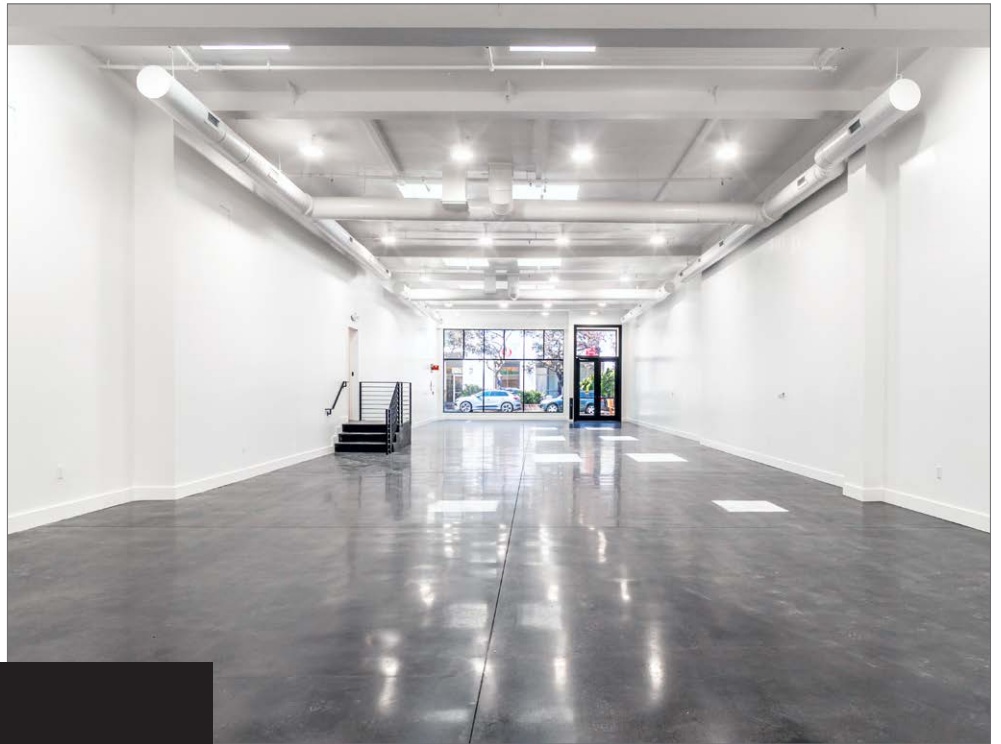
1751 FULTON
STREET

THE VILLAGE
AT PETRINI PLACE





1 | 7 | 5 | 1 FULTON STREET





SUMMARY

1751 Fulton Street is a newly renovated 4,258 SF retail space in San Francisco's vibrant NOPA neighborhood. With its recent (2024) renovation, this property offers an exceptional opportunity for businesses seeking a modern and versatile space to thrive. The interior of this retail space has been completely transformed, featuring all new systems, walls, roof, windows, siding, drywall, paint structural and seismic upgrades. The result is a space that combines contemporary aesthetics with functional design, providing the ideal backdrop for a variety of uses. The vast ceilings create an open and airy atmosphere, offering endless possibilities for showcasing your brand and products. One of the standout features of this property is its newly designed facade, which is not only visually appealing but also contributes to the property's great visibility and signage opportunities. The large storefront windows invite abundant natural light, ensuring a bright and inviting ambiance for customers.

Situated near the University of San Francisco, this retail space benefits from its prime location. The proximity to the university brings a steady flow of foot traffic, ensuring a consistent customer base. Additionally, free public parking is conveniently located across the street and provides easy access for both customers and employees. NOPA is a vibrant and sought-after neighborhood in San Francisco, known for its eclectic mix of restaurants, shops, and cultural attractions. Its proximity to public transportation options, such as buses and light rail, ensures easy accessibility for customers from all corners of the city.

WALK/BIKE/TRANSIT SCORE

96
WALK SCORE

77
BIKE SCORE

96
TRANSIT SCORE

BUS LINES:
5, 21, 31, 43

USF
Koret Health and
Recreation Center



1751 FULTON STREET

USF SCHOOL OF LAW

MANITAS CAFE

Dignity Health
St. Mary's Medical Center



**BISTRO
CENTRAL
PARC**



- AMOEBA MUSIC
- LAGUNA CAFE
- CHA CHA CHA
- GINZA SUSHI
- ESCAPE FROM NEW YORK
- BOOKSMITH
- JOHN FLUEVOG
- CAFE COLE
- DECADES OF FASHION
- DRAGONHEATS
- INDIGO CO-OP
- DR. MARTENS
- CARY LANE
- STREET TACO
- ABU
- HELD OVER
- SLICE HOUSE
- CLUB DELUXE
- AVIATOR NATION
- MAD DOG
- 2ND STREET
- MENDELS
- GUS'S MARKET
- BEN & JERRY'S
- WAKE CUP
- PIEDMONT BOUTIQUE
- 1428 HAIGHT
- LOVE ON HAIGHT
- MAGNOLIA BREWING
- CEIBA
- CANDY'S
- FIREBIRD YARNS
- RITUAL COFFEE





BISTRO CENTRAL PARC



EARLY TO RISE



MANITAS CAFE



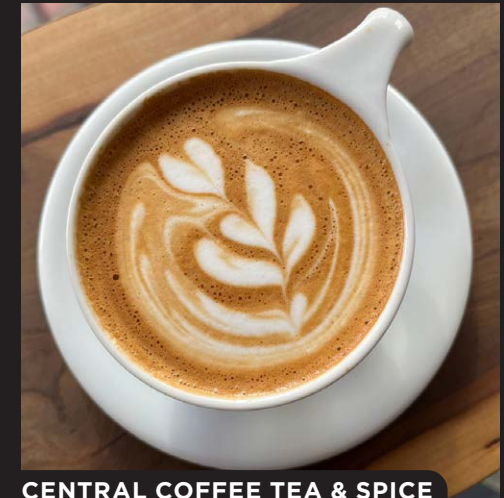
BOB'S ON BAKER STREET



PAPALOTE



UNIVERSITY OF SAN FRNACISCO

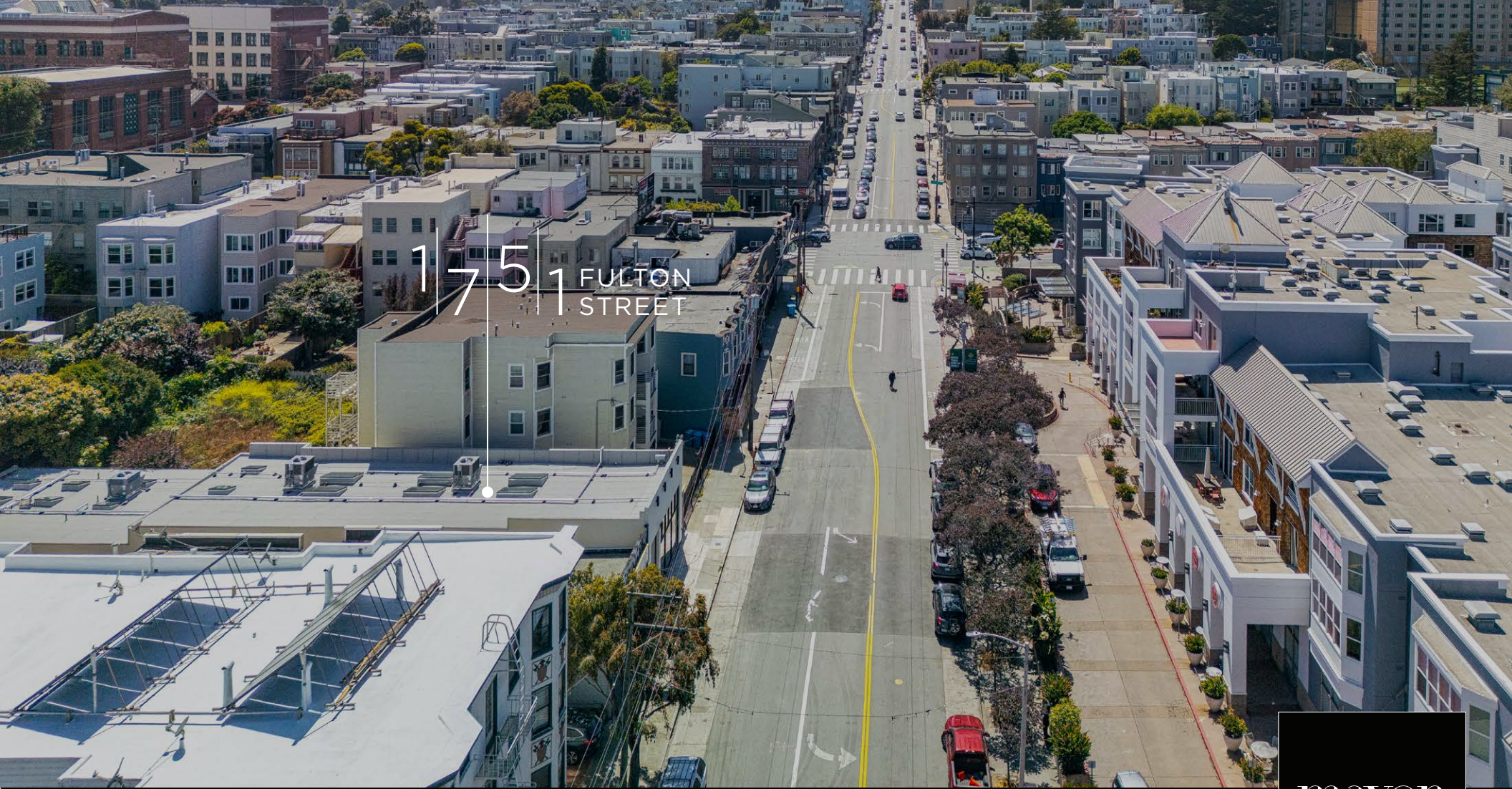


CENTRAL COFFEE TEA & SPICE

NOPA

1751 Fulton Street is located in the NOPA neighborhood.

NOPA known as the “North of PanHandle” is also north of the iconic Golden Gate Park and adjacent to the Panhandle, a long, narrow park that connects the larger park to the Haight-Ashbury neighborhood. NOPA is known for its mix of residential and commercial areas, offering a blend of urban convenience and neighborhood charm. The neighborhood features a diverse array of architectural styles, ranging from Victorian and Edwardian homes to modern apartment complexes. The streets are lined with beautiful tree-lined blocks and well-maintained sidewalks. NOPA is also home to a lively commercial corridor along Divisadero Street. This bustling street offers a wide range of shops, boutiques, restaurants, cafes, bars, and music venues. It has become a popular destination for locals and visitors alike, known for its vibrant nightlife and diverse culinary scene.



1751 FULTON STREET

CONTACT

JOAN RUYLE

Office 415.404.7313
joan@mavenproperties.com
DRE #02006025

HALEY KLEIN

Office 415.404.7330
haley@mavenproperties.com
DRE #1907308



NOTICE: This information has been secured from sources we believe to be reliable but we make no representations, warranties, express or implied, as to the accuracy of the information. Listing broker has been given enough information to provide only a preliminary interest in the property. The materials are not to be considered fact. The information contained herein is not a substitute for thorough due diligence investigation. References to square footage, zoning, use, or age are approximate. Please contact the San Francisco Planning Department to verify zoning at (415) 558-6378, as neither broker or landlord represent that this space is suitable for your use. Tenant or Buyer must verify the information at their own expense and bears all the risk for any inaccuracies. By receiving these materials you are agreeing to the disclaimers set forth herein. DRE#01878802