



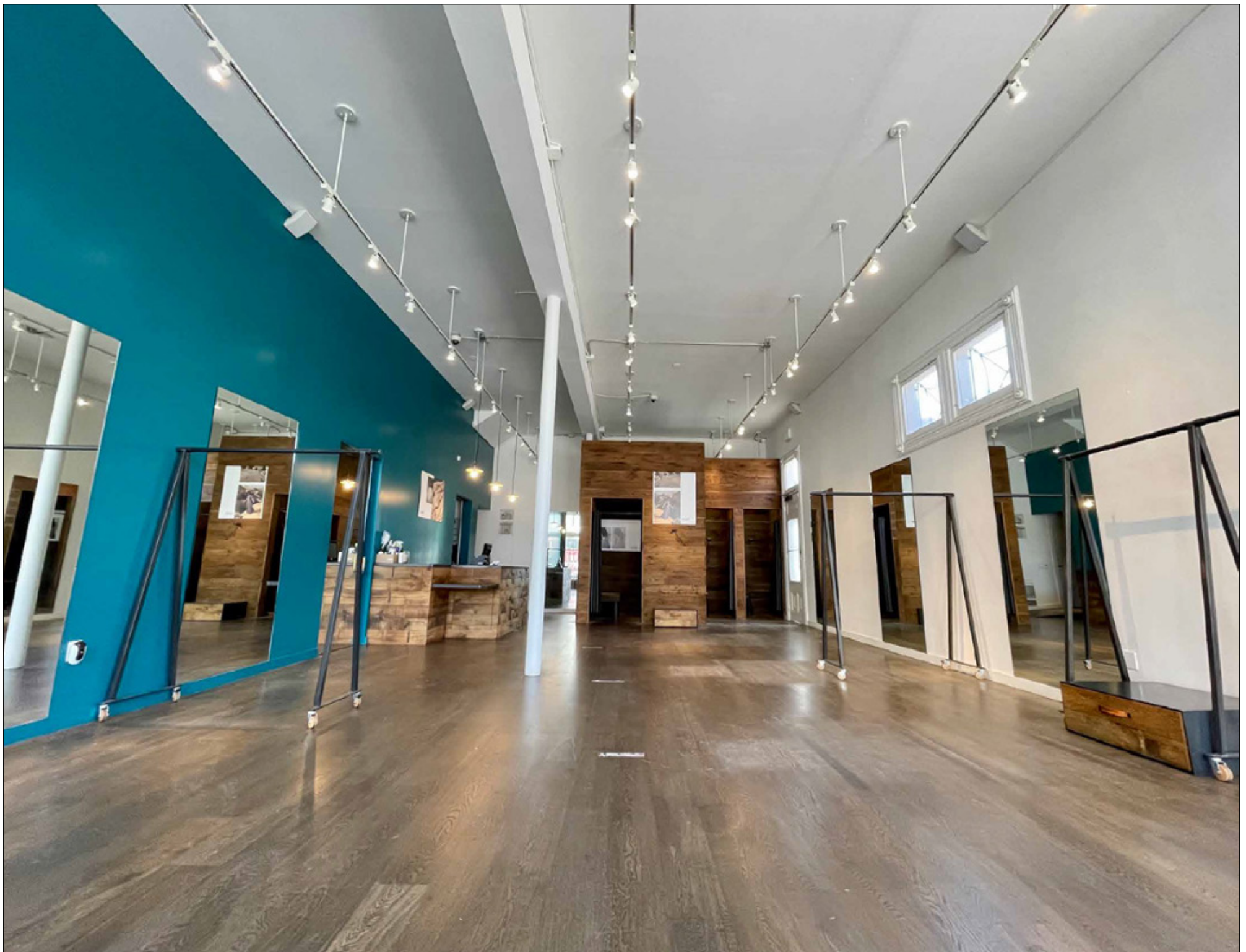
597 HAYES STREET
SAN FRANCISCO | CA

RETAIL OPPORTUNITY
1,000 SF + LOWER LEVEL

maven
RETAIL

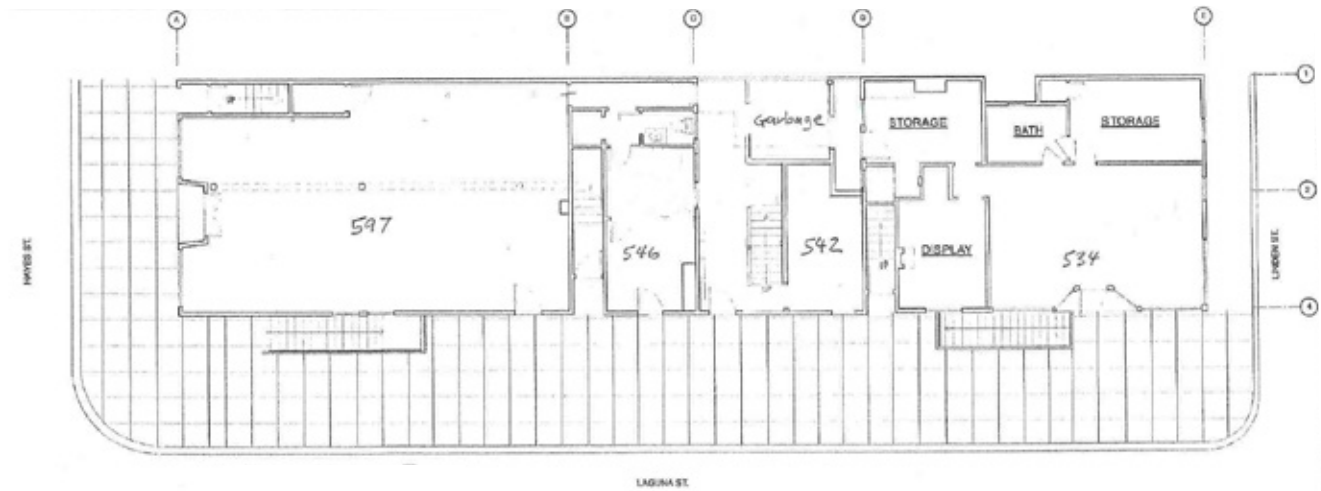
FEATURES

- +/- 1,000 sq. ft ground floor retail
- Can be combined with lower-level space (+/- 2,000 sq. ft.)
- Bathroom shared with one other unit
- Large display windows
- Excellent visibility
- Corner location
- High ceilings with open floor plan
- Centrally located near some of San Francisco's best restaurants and retailers
- Close proximity to MUNI/BART

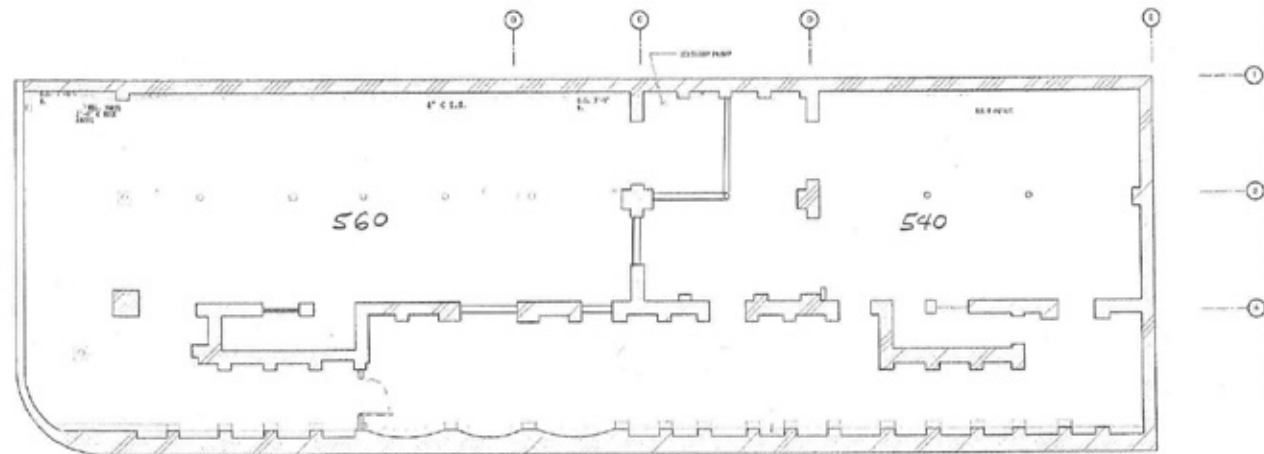


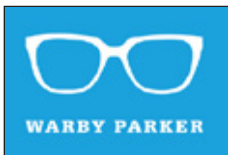
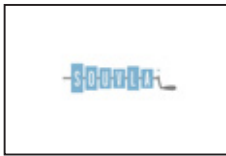
Floor Plans

1ST FLOOR



BASEMENT





HAYES STREET

Petit Crenn	609
Suppenkuche (Restaurant)	525
High Road Bikes	597
Noir Lounge	581
Gioia Pizzeria	579
Metier	575
Oak and Fort	567
Nablia's Market	559
Outdoor Voices	555
SF Dance Gear	551
Rails	541
Alla Prima (Lingerie)	539
Peak Design	529
Brooklinen	525
	519
Souvla	517
Patxi's Pizza	511
Hazies	501

Smitten Ice Cream	432
Aether	489
The Epicurean Trader (Coming Soon)	465
Azil	451
Parachute	445
Amour Vert	437-A
ZERO&	437
Lucid Beauty	427
Papito	425
Allbirds	425
APC / AESOP	411
Christopher Elbow Artisanal Chocolates	401

Doppio Zero	395
Garrett Leight California Optical	393
Interior Define	381
Sugar Lounge (bar)	379
Away	371
Plumber	369
Warby Parker	355
Creative Nail Care	347
Jest Jewels/Available	333
Meowtel	327
Mejuri	327-A
Lers Ros (Thai Restaurant)	307
Red Radish	301

602 The Glaze

LAGUNA STREET

590	Todd Snyder
586	Salt & Straw
584	Through the Hayes
572	Cotton Sheep
568	Buck Mason
564	Orange Bird
560	True Sake (sake bar)
556	True Sake
552	Credo
544	Reliquary
542	Faherty
540	Fiddlesticks
528	Industry
526	Archer Nails
524	Paolo
522	Aviator Nation
516	Undeclared
508	Malin+ Goetz
506	Timbuk2
500	La Boulange

OCTAVIA STREET

498	Marine Layer
494	Headlights (Hair Salon)
492	Lux Nail Salon
488	Brass Tacks
482	Anina
450	Urban Remedy
450 C-2	A Mano
424	Upwest
418	Bulo's Women's Shoes
416	AHLEM
406	Dobb's Ferry Restaurant
400	Chez Maman Café

GOUGH STREET

398	Absinthe
384-B	Arbor
372	Arlequin Wine Shop
370	F.Dorian
364	Project Juice
364	Maker & Moss
364	Minimal
350	Last Mile (Scooter service)
348	Ei Home
336	Arden Home
320	Hayes Street Grill (Seafood Restaurant)

FRANKLIN STREET



Hayes Valley

Hayes Valley or newly noted as “Cerebral Valley” is a neighborhood in San Francisco known for its vibrant retail scene and epicenter of cutting-edge AI development. The area is known for its diverse mix of independent boutiques, vintage shops, art galleries, and high-end designer stores, housed in historic buildings and Victorian homes that have been repurposed for commercial use. Hayes Valley is a popular destination for locals and tourists alike, who come to explore the unique shopping and dining options in the area. In addition to retail, Hayes Valley is also home to parks, cultural events, and community organizations that contribute to its dynamic atmosphere.



ZUNI CAFÉ



PARACHUTE



CLARE V



MARINE LAYER



AMOUR VERT



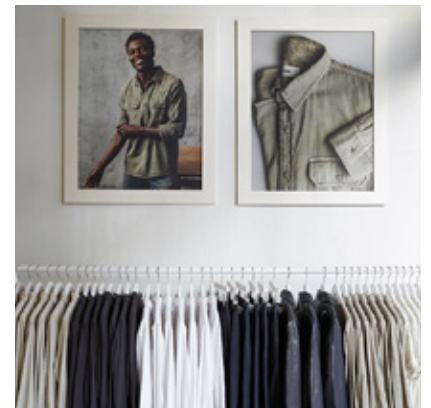
CALA



WARBY PARKER



ALLBIRDS



BUCK MASON



GLORIA NORDBAKK

Marketing Associate
office 415.225.0626
gloria@mavenproperties.com
DRE #02207407

LORRAINE CAMPOS

Marketing Associate
office 415.335.3013
lc@mavenproperties.com

PAMELA MENDELSON

office 415.404.6650
pam@mavenproperties.com
DRE #00953050

597 HAYES STREET — FOR LEASE

NOTICE: This information has been secured from sources we believe to be reliable but we make no representations, warranties, express or implied, as to the accuracy of the information. Listing broker has been given enough information to provide only a preliminary interest in the property. The materials are not to be considered fact. The information contained herein is not a substitute for thorough due diligence investigation. References to square footage, zoning, use, or age are approximate. Please contact the San Francisco Planning Department to verify zoning at (415) 558-6378, as neither broker or landlord represent that this space is suitable for your use. Tenant or Buyer must verify the information at their own expense and bears all the risk for any inaccuracies. By receiving these materials you are agreeing to the disclaimers set forth herein. DRE#01878802