

**7 CLAUDE LANE**  
SAN FRANCISCO | CA

**RESTAURANT OPPORTUNITY**  
2,714 SF

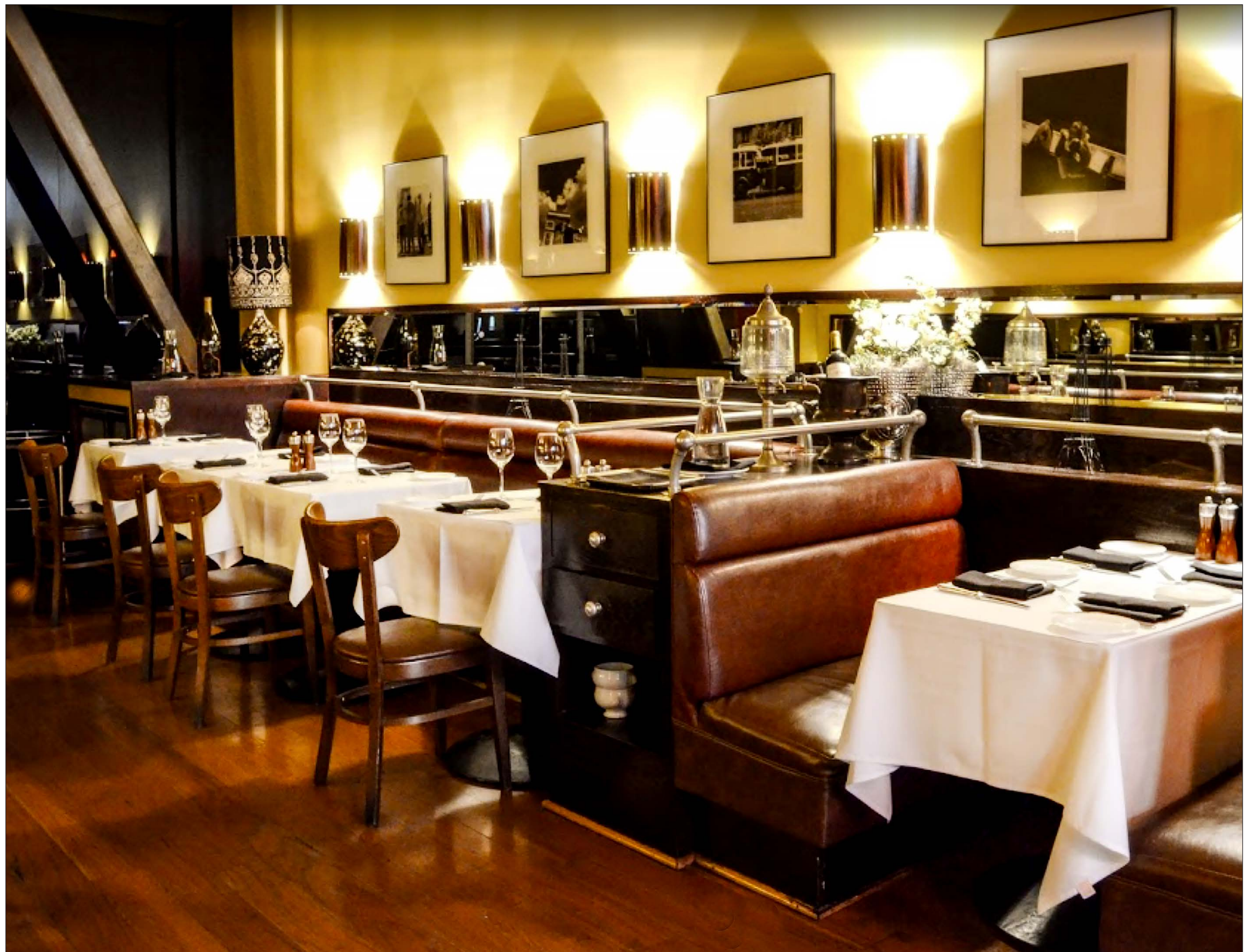
**maven**  
RETAIL

# F E A T U R E S

Since 1989 Café Claude graced downtown San Francisco with its unpretentious but delicious French food and lively jazz scene, all cocooned in a charming alley way reminiscent of Saint-Germain-des-Prés. Available for the first time in over 30 years, 7 Claude Lane offers two type 1 hoods, a small ground floor kitchen and large downstairs prep kitchen, a full bar, three dinning rooms and an office. Come see this once in a generation opportunity for yourself and create the next great San Francisco dinning experience.

- 2,714 SF
- Historic bar
- High ceilings
- Lots of character
- Ample storage
- Alley seating possible

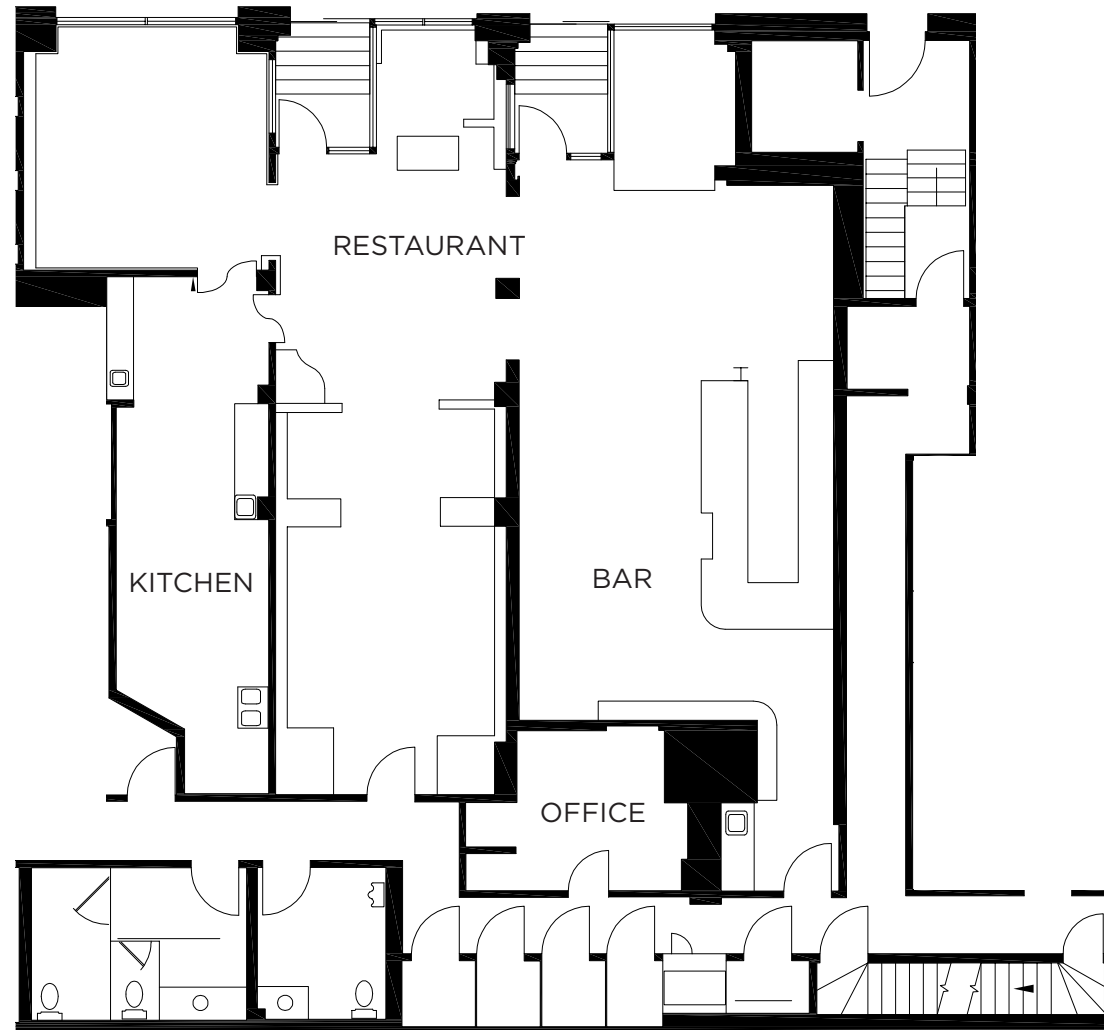








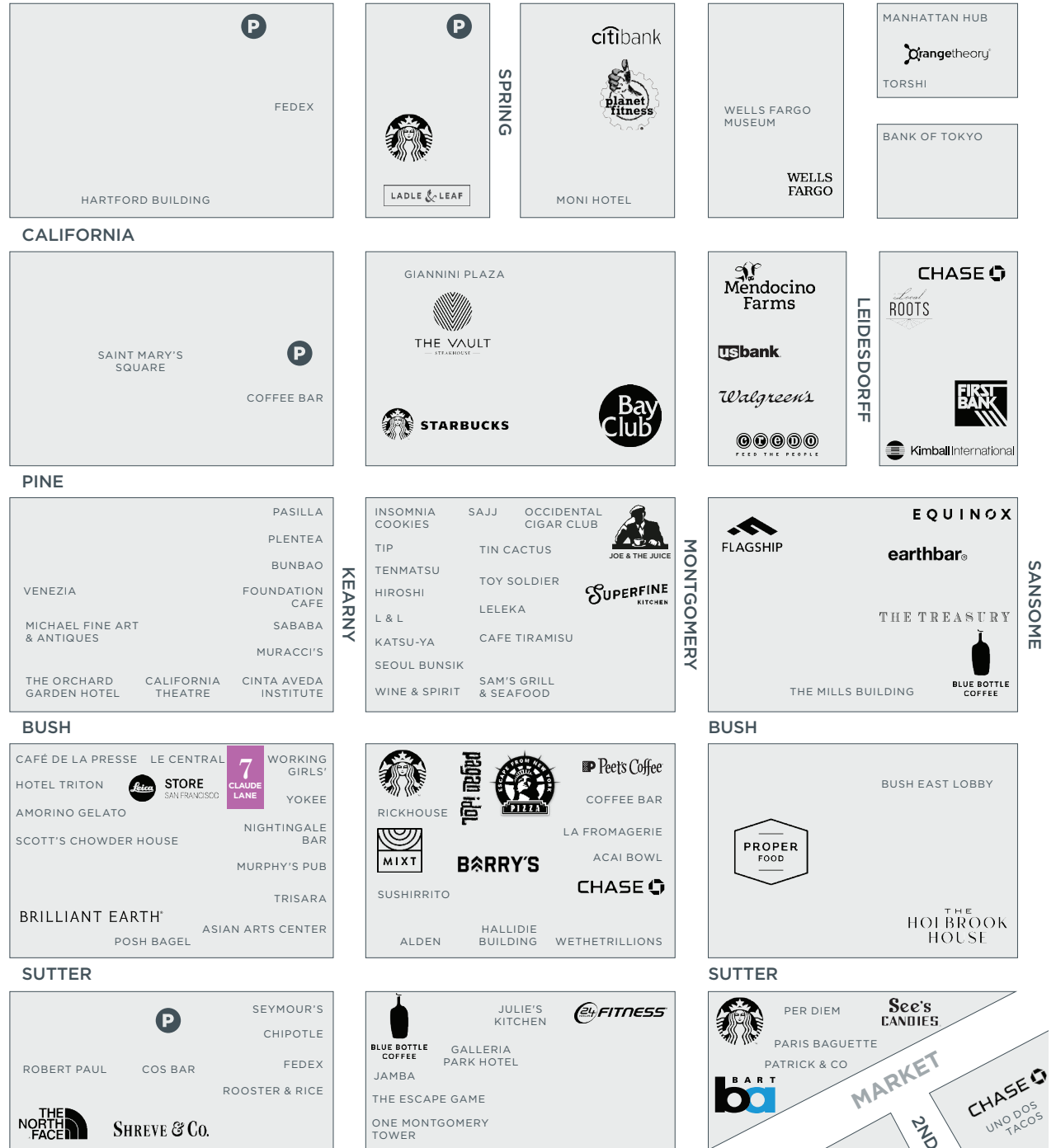
# Floor Plan



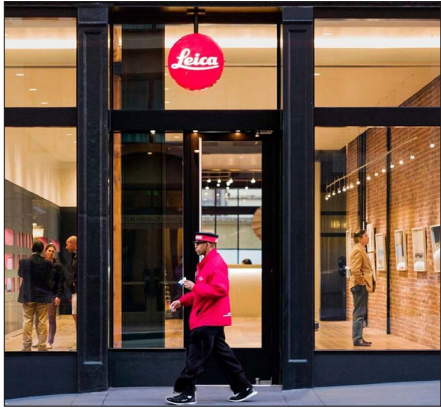
# Neighborhood

↑  
**CHINATOWN**  
DRAGON'S GATE

**UNION**  
**SQUARE**  
↓







**LEICA**



**AVEDA INSTITUTE**



**UNION SQUARE**



**E&O KITCHEN & BAR**



**CAFE DE LA PRESSE**



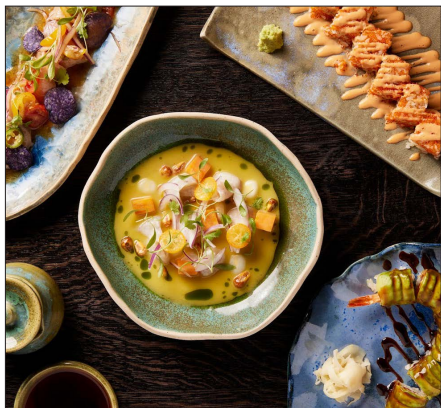
**CHINATOWN**



**LE CENTRAL**



**MIXT GREENS**



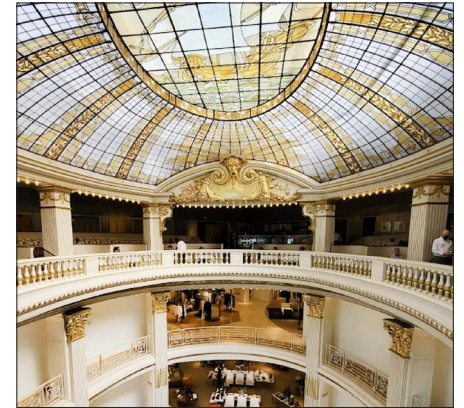
**CHOTTO MATTE**



**RICKHOUSE**



**BLUE BOTTLE COFFEE**



**NEIMAN MARCUS**



A photograph of a restaurant interior. The room has a high ceiling with exposed wooden beams and a warm, yellowish light. Several tables are set with white tablecloths, white linens, and glassware. The walls are decorated with framed pictures. In the background, there is a bar area with shelves of bottles.

maven  
RETAIL

**ALI MCEVOY**

office 415.404.7343

ali@mavenproperties.com

DRE #01930635

**7 CLAUDE LANE — FOR LEASE**

NOTICE: This information has been secured from sources we believe to be reliable but we make no representations, warranties, express or implied, as to the accuracy of the information. Listing broker has been given enough information to provide only a preliminary interest in the property. The materials are not to be considered fact. The information contained herein is not a substitute for thorough due diligence investigation. References to square footage, zoning, use, or age are approximate. Please contact the San Francisco Planning Department to verify zoning at (415) 558-6378, as neither broker or landlord represent that this space is suitable for your use. Tenant or Buyer must verify the information at their own expense and bears all the risk for any inaccuracies. By receiving these materials you are agreeing to the disclaimers set forth herein. DRE#01878802

**466 Green Street Suite #203 | San Francisco, CA 94133 | 415-781-7700 | [www.mavenproperties.com](http://www.mavenproperties.com)**